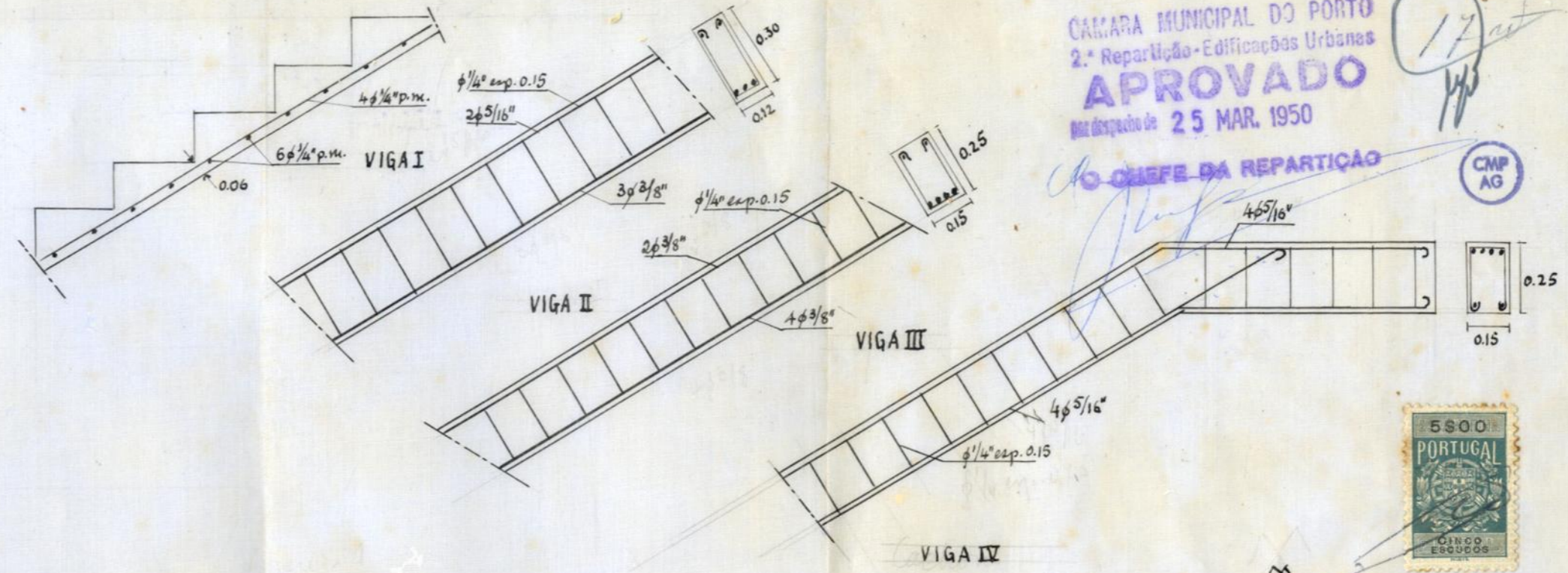
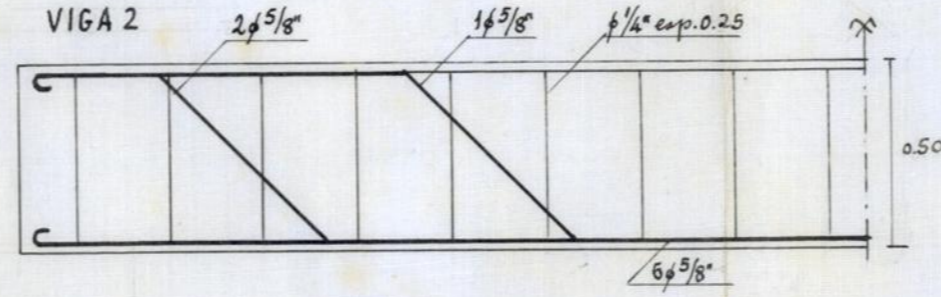
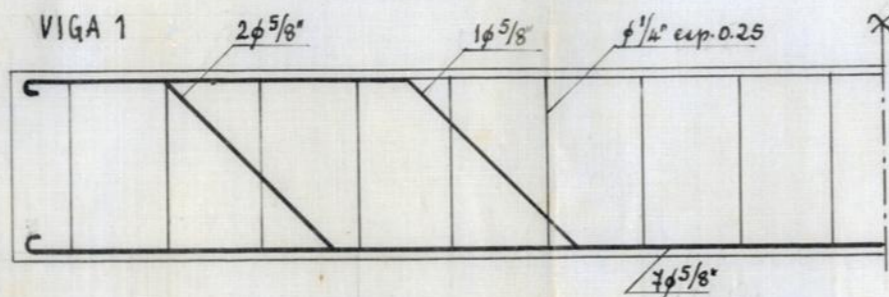
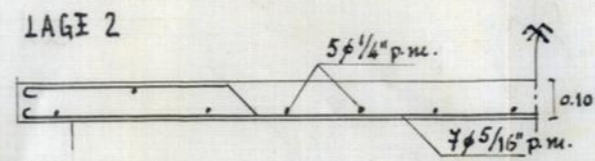
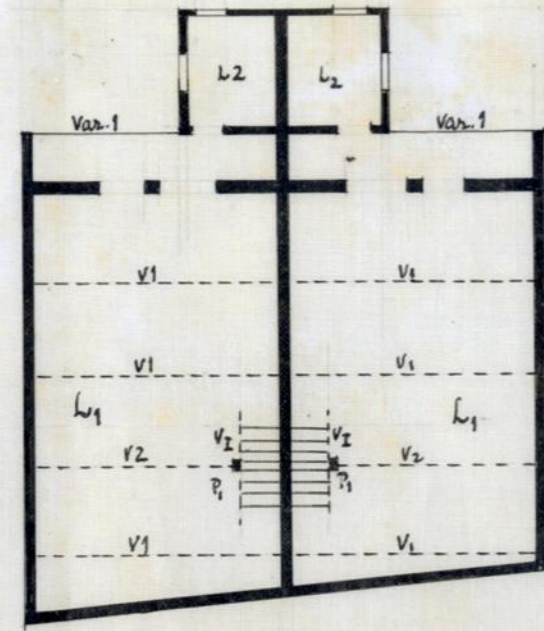
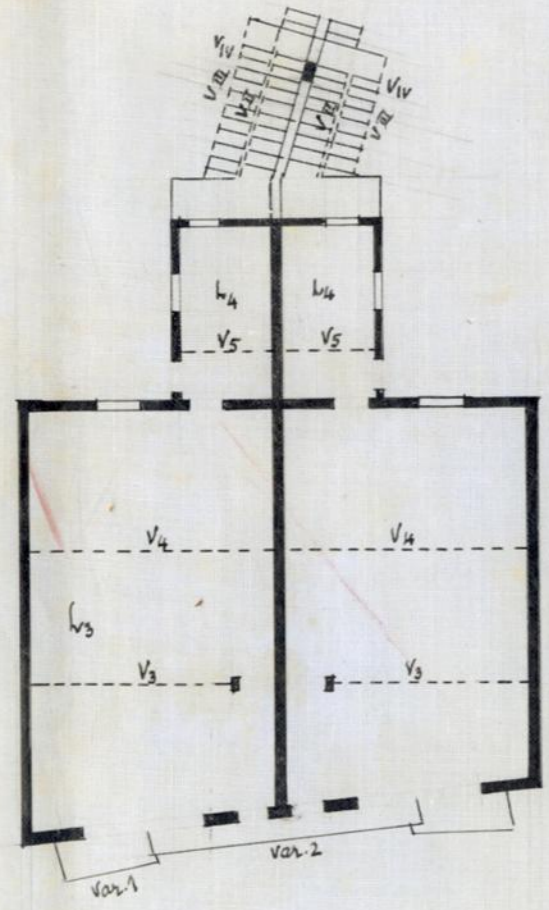
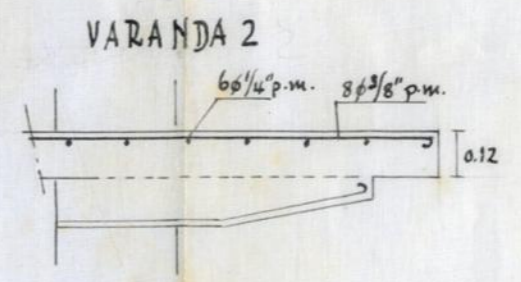
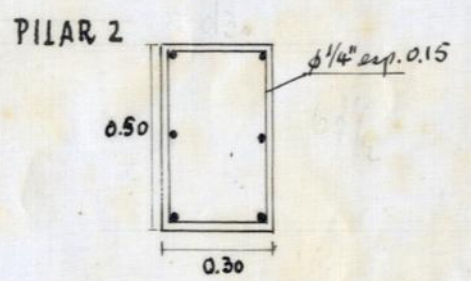
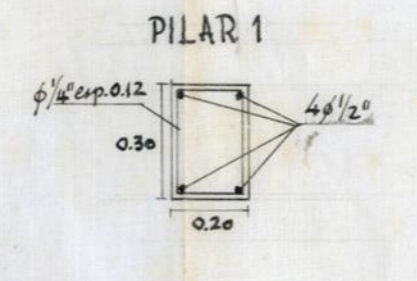
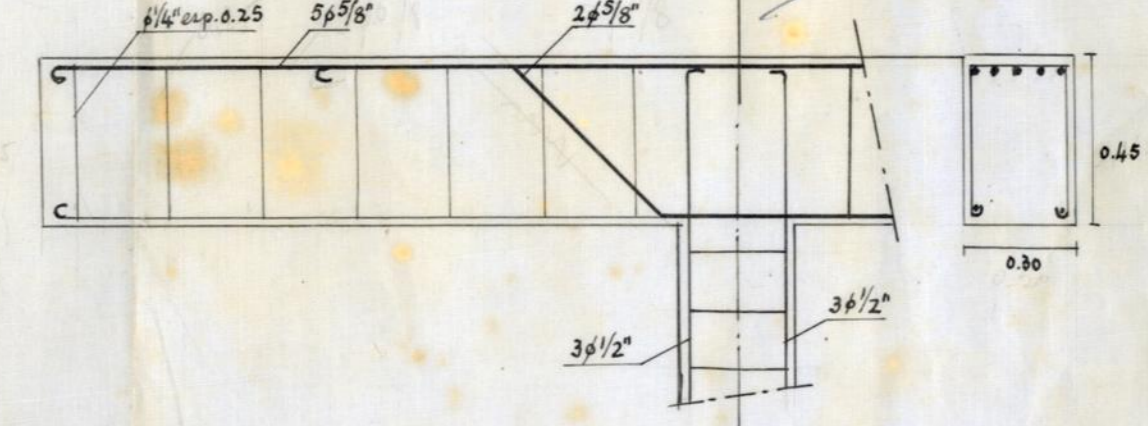
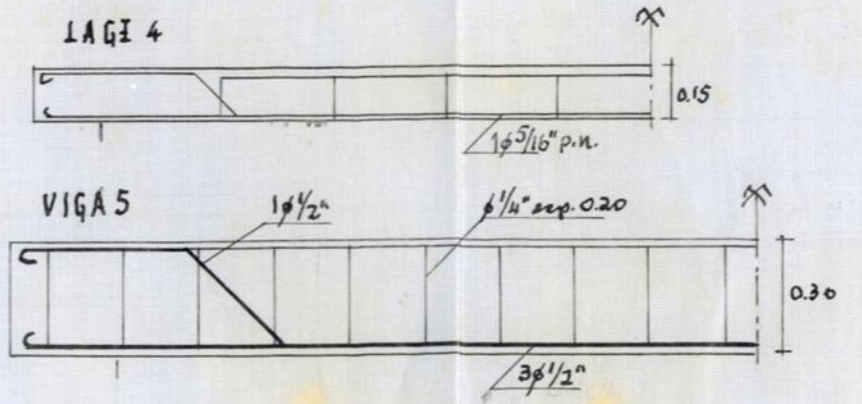
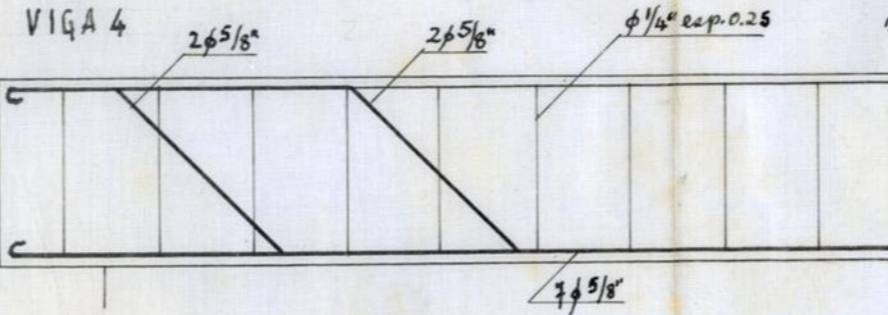
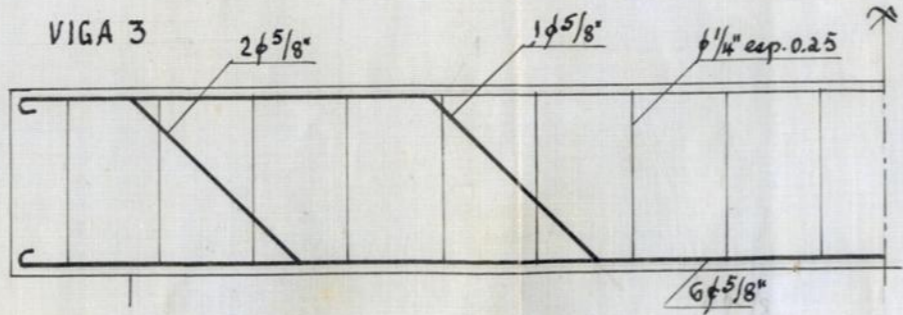
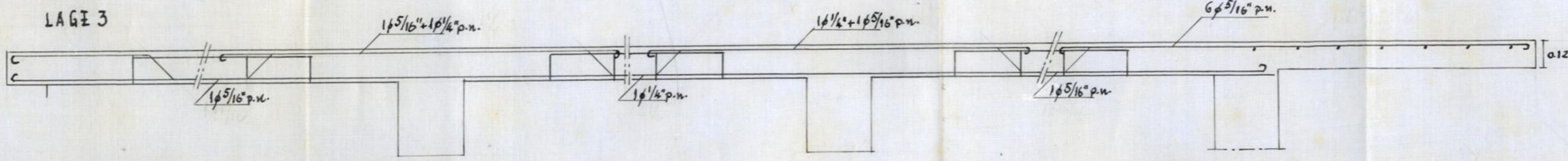
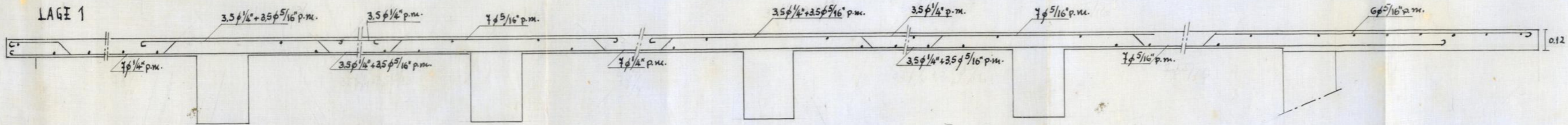


ORGANIZAÇÃO DE FOMENTO COOPERATIVO

ESCALA 1:20



CÂMARA MUNICIPAL DO PORTO
2.ª Repartição - Edificações Urbanas
APROVADO
Município de 25 MAR. 1950
O CHEFE DA REPARTIÇÃO



M. Trajezinha Louqueis
Eng. Civil (u. P.)