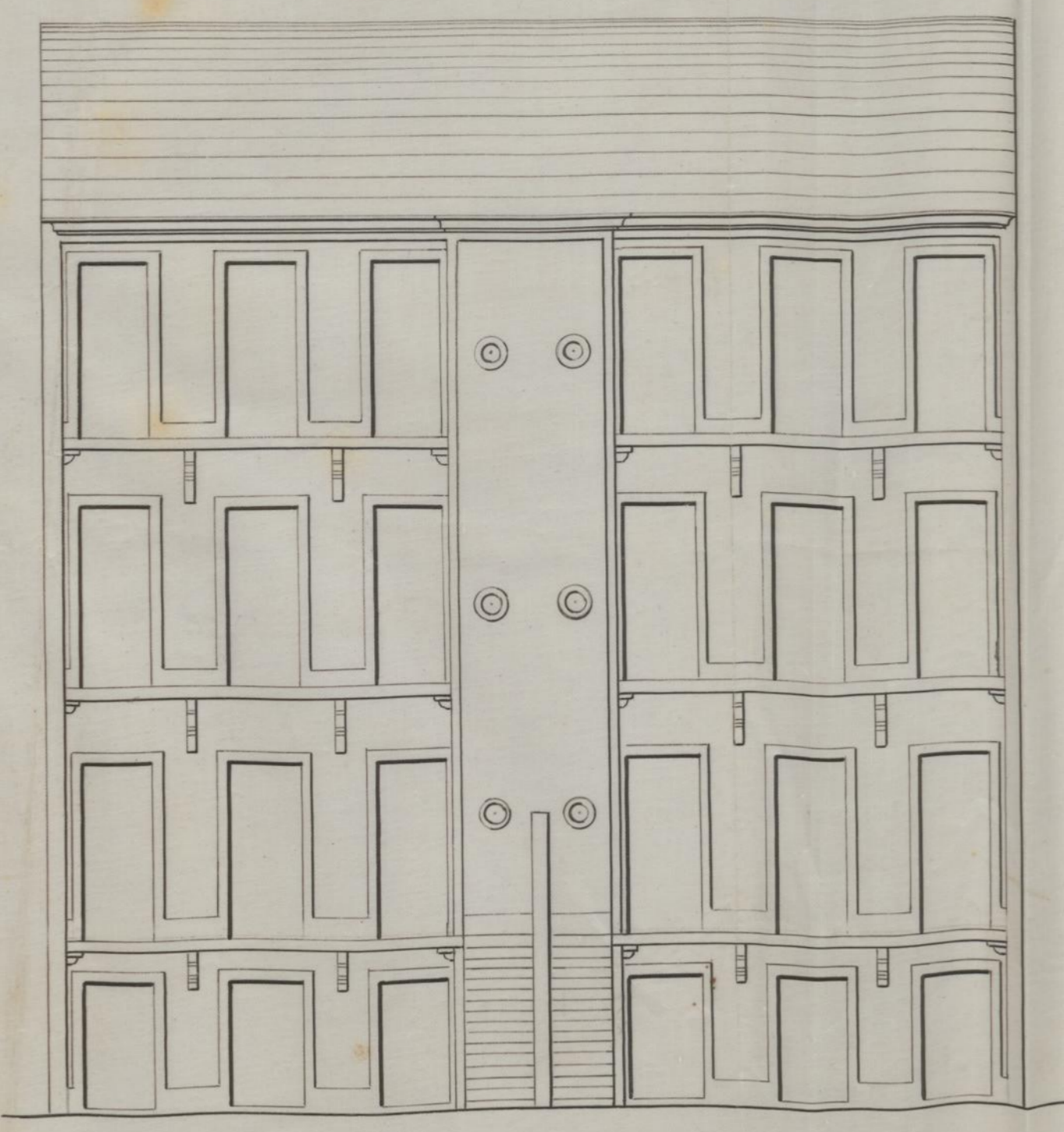


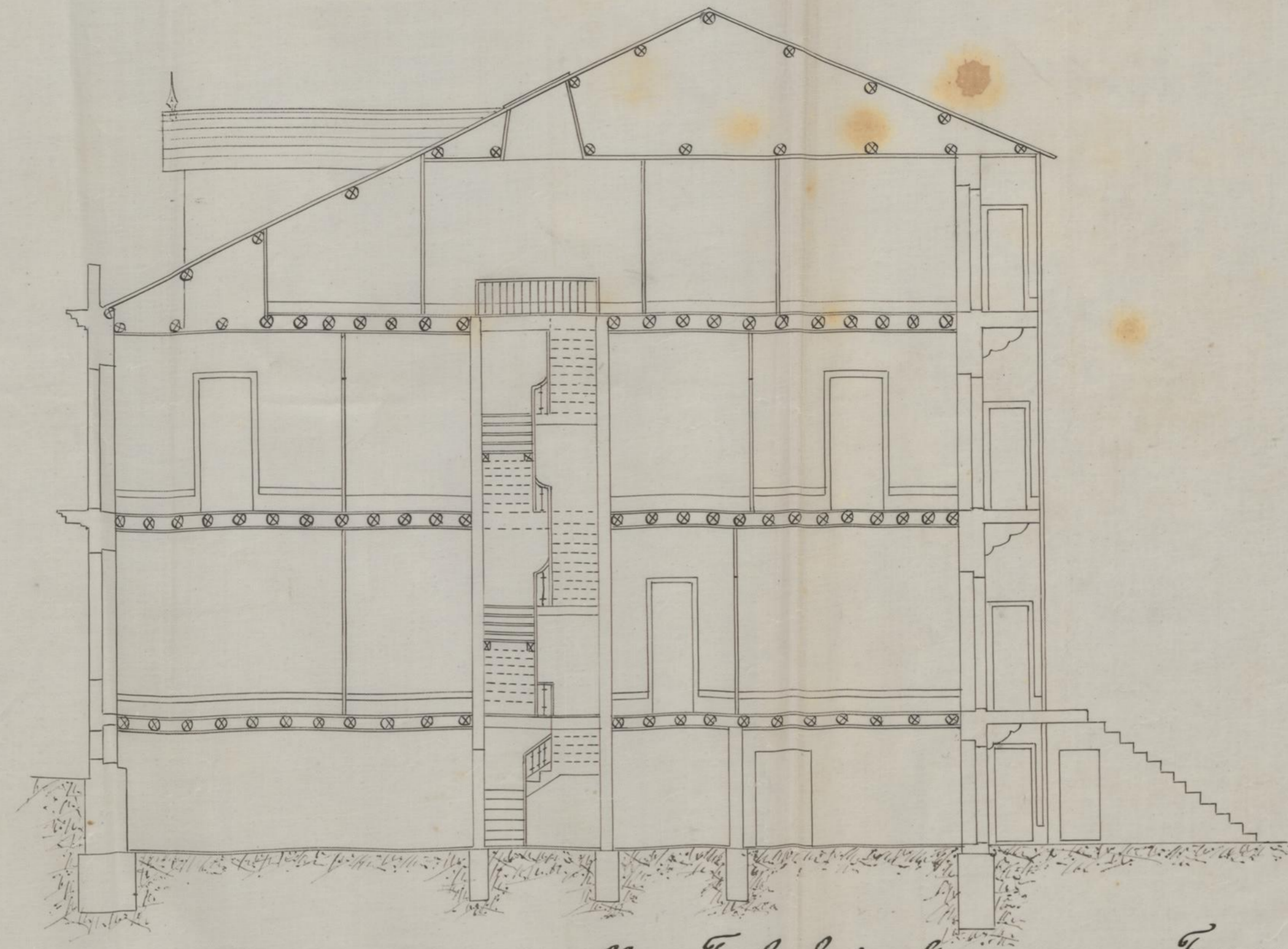
*Alçado da frente. Simples*



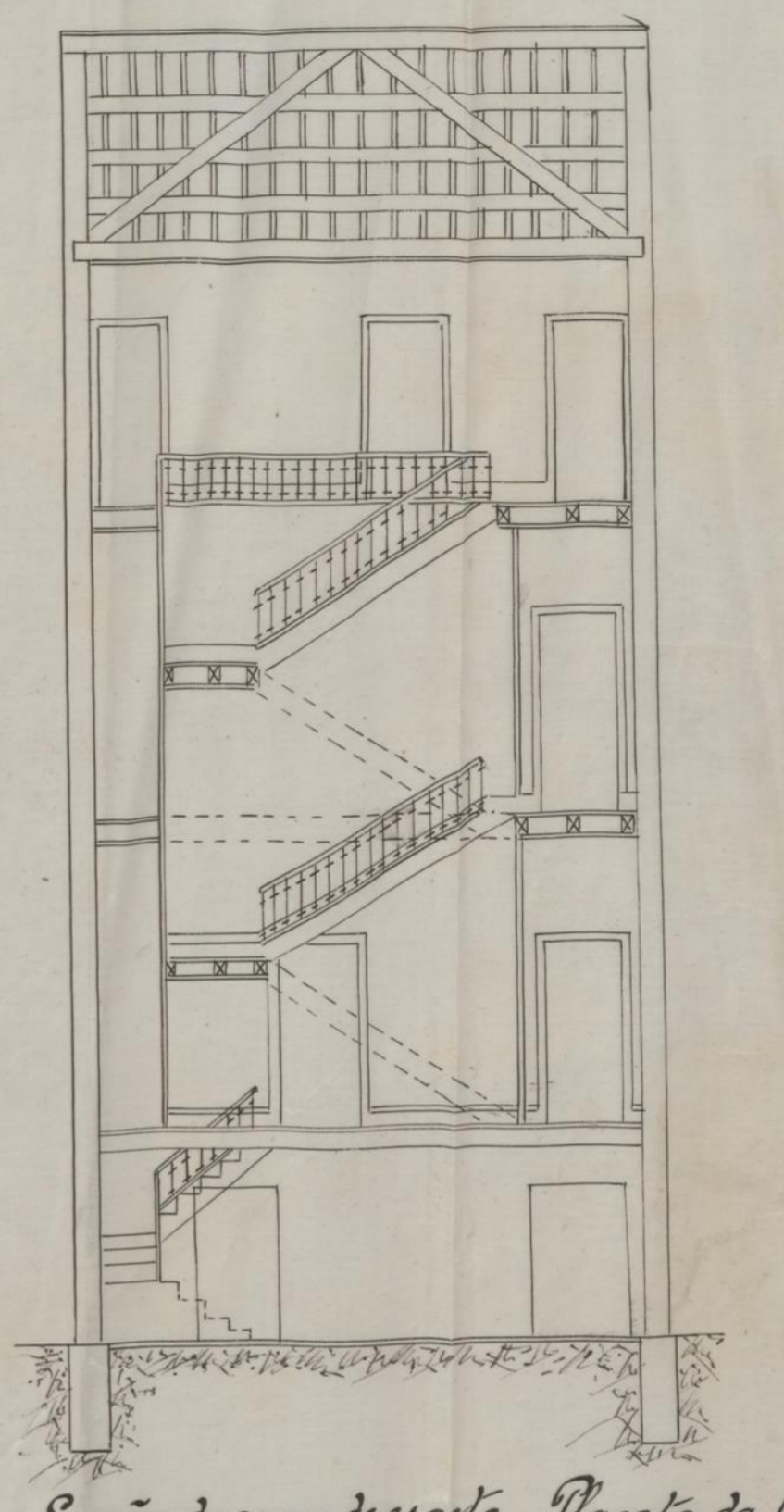
*Alçado das traseiras.*



*Corte em A B.*

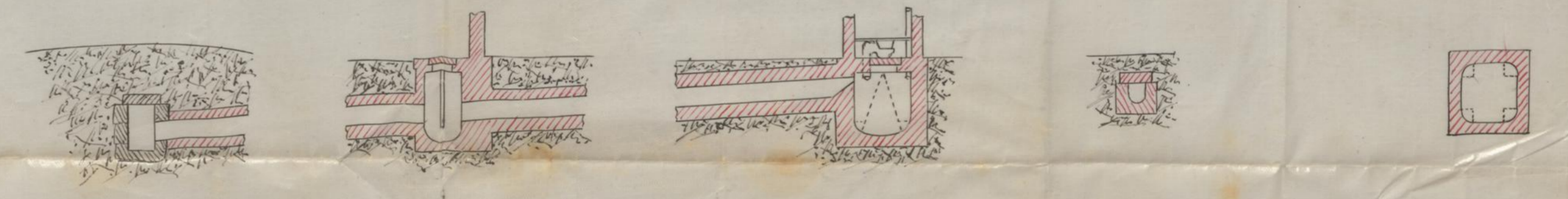


*Corte em C D.*

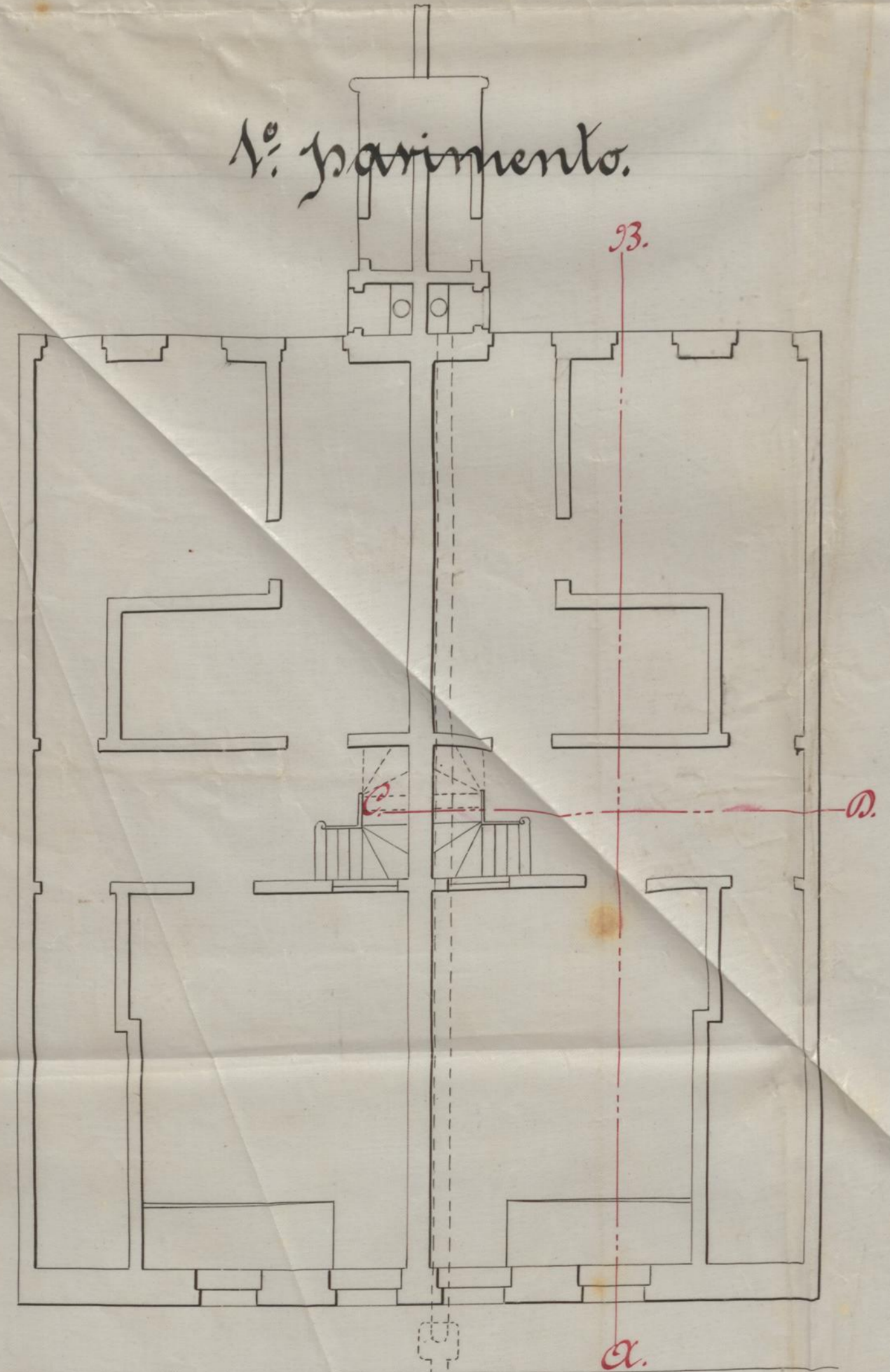


*Aqueduto publico. Tecto hydraulico. Fossa. Secção do cano de esgôto. Planta da fossa.*

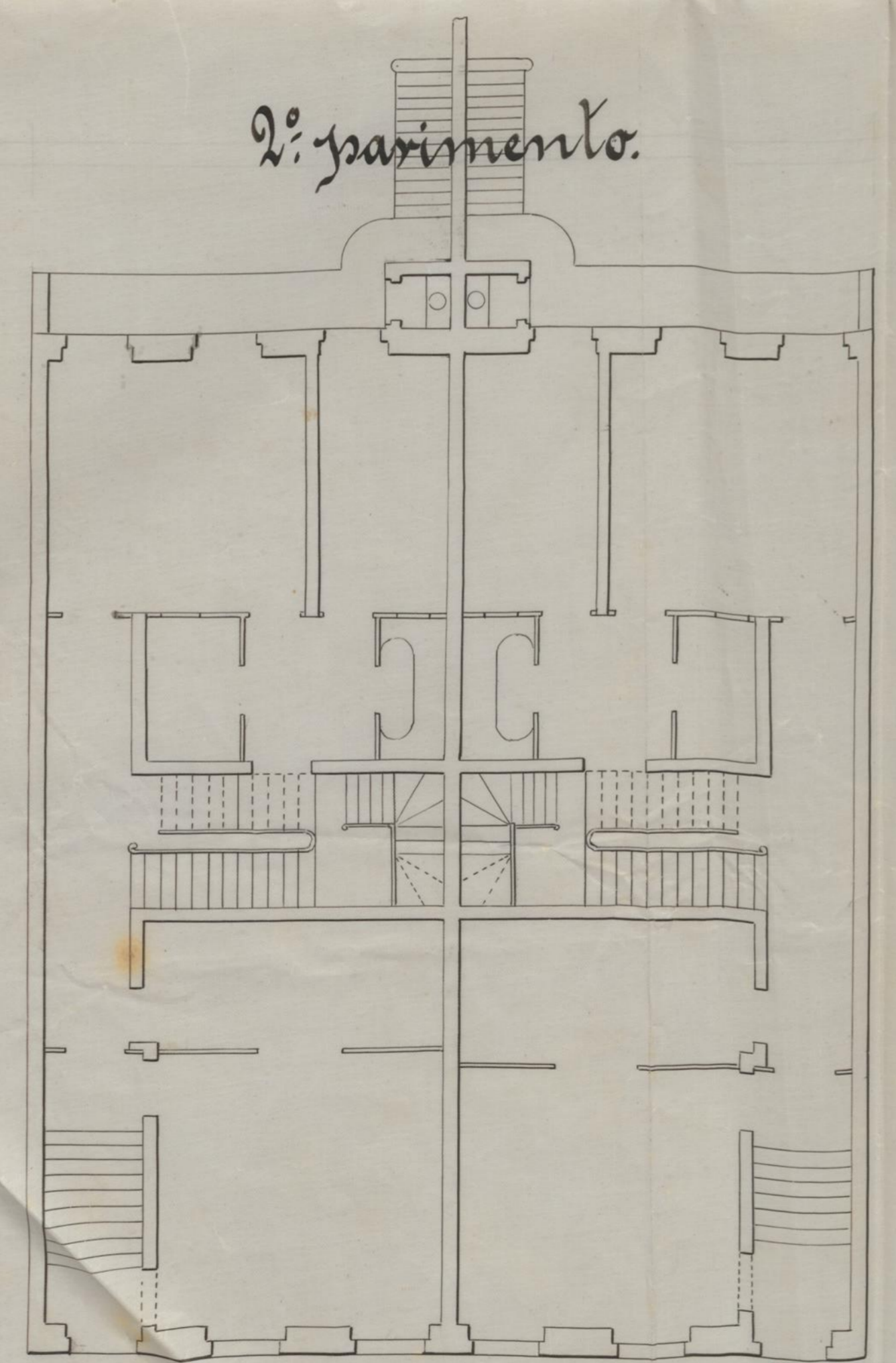
*Plantas:*



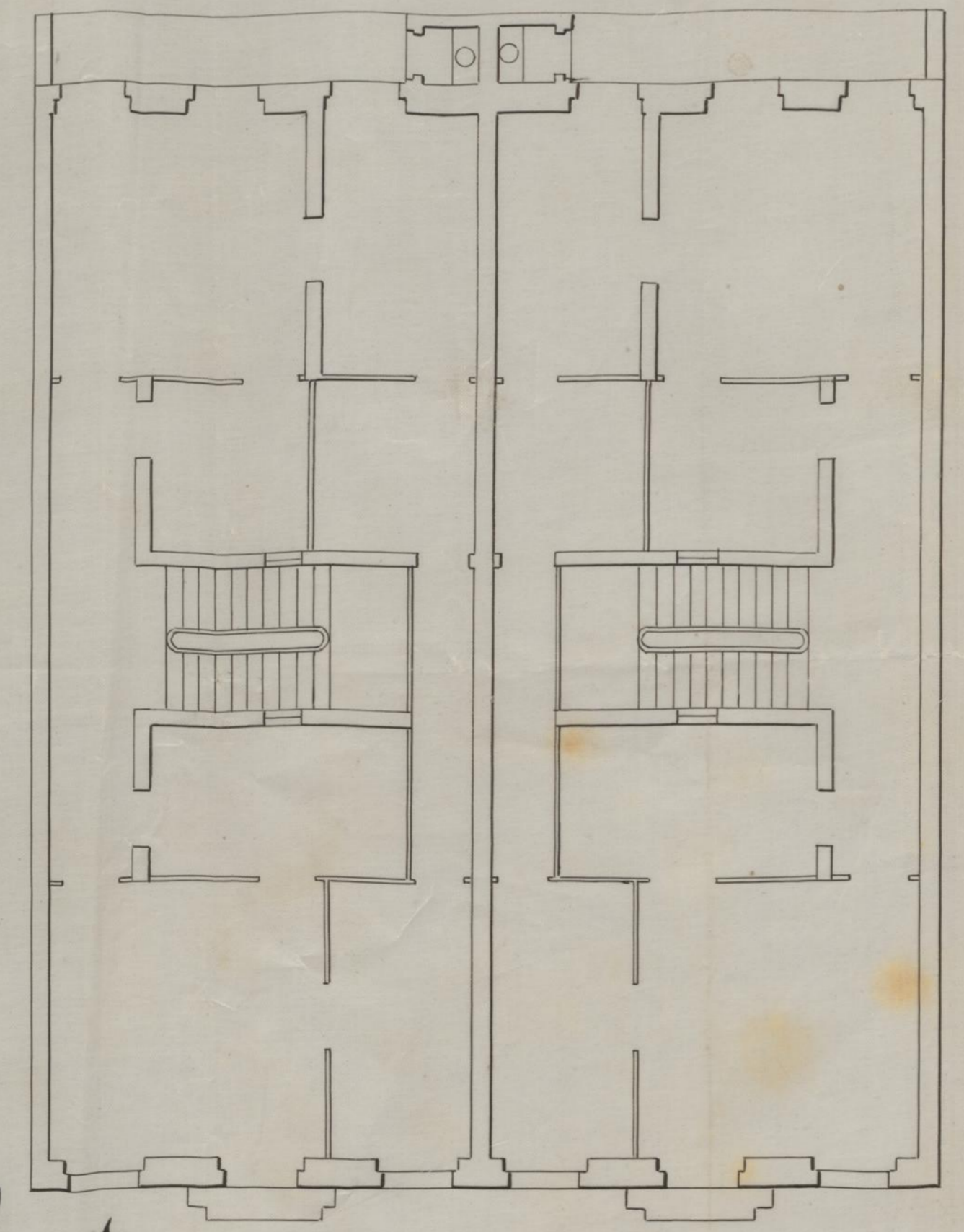
*1.º pavimento.*



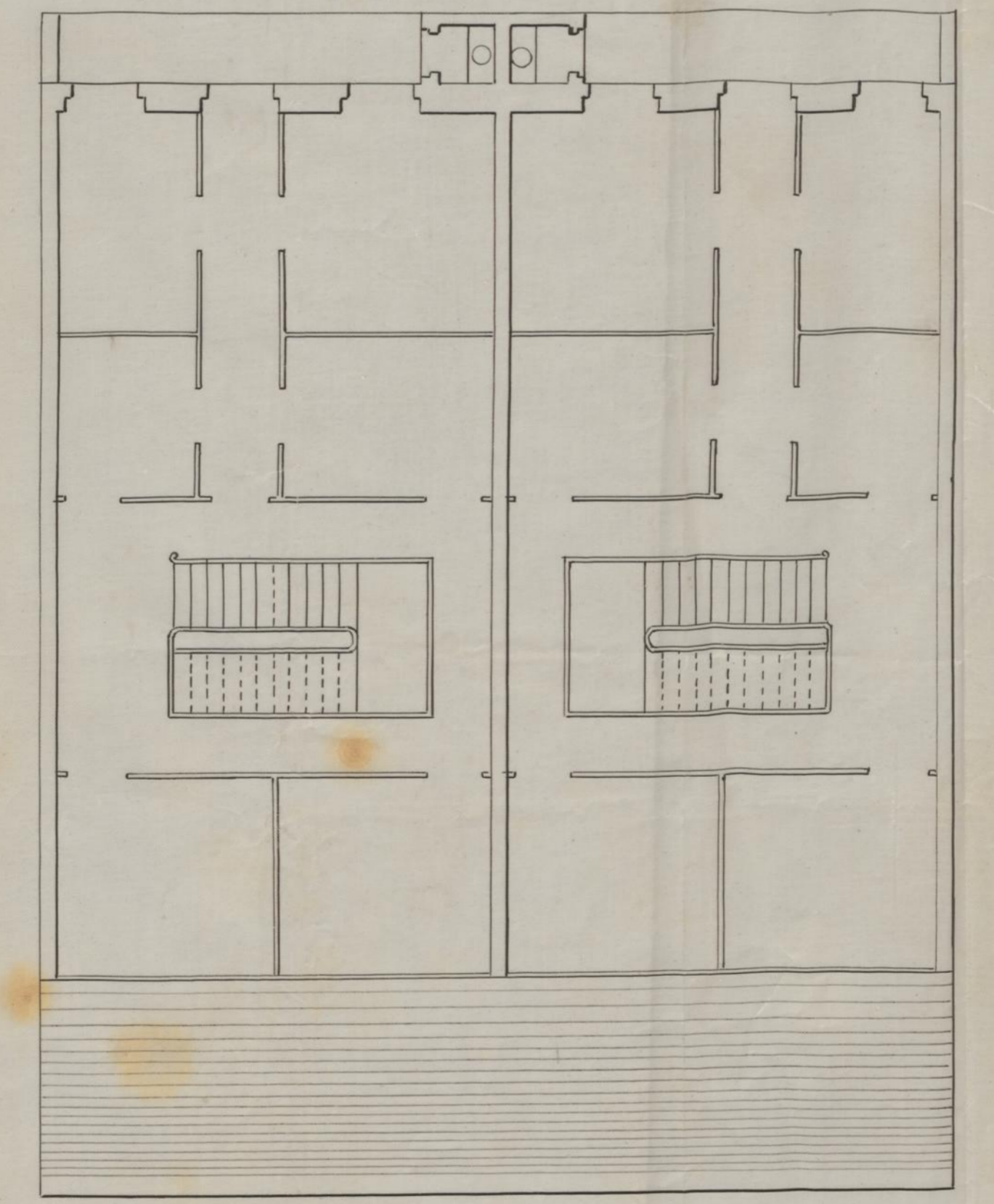
*2.º pavimento.*



*3.º pavimento.*



*4.º pavimento.*



*Escala: 1/100*

*Antonio da Costa Fontes.*

*Rua da Liberdade.*

