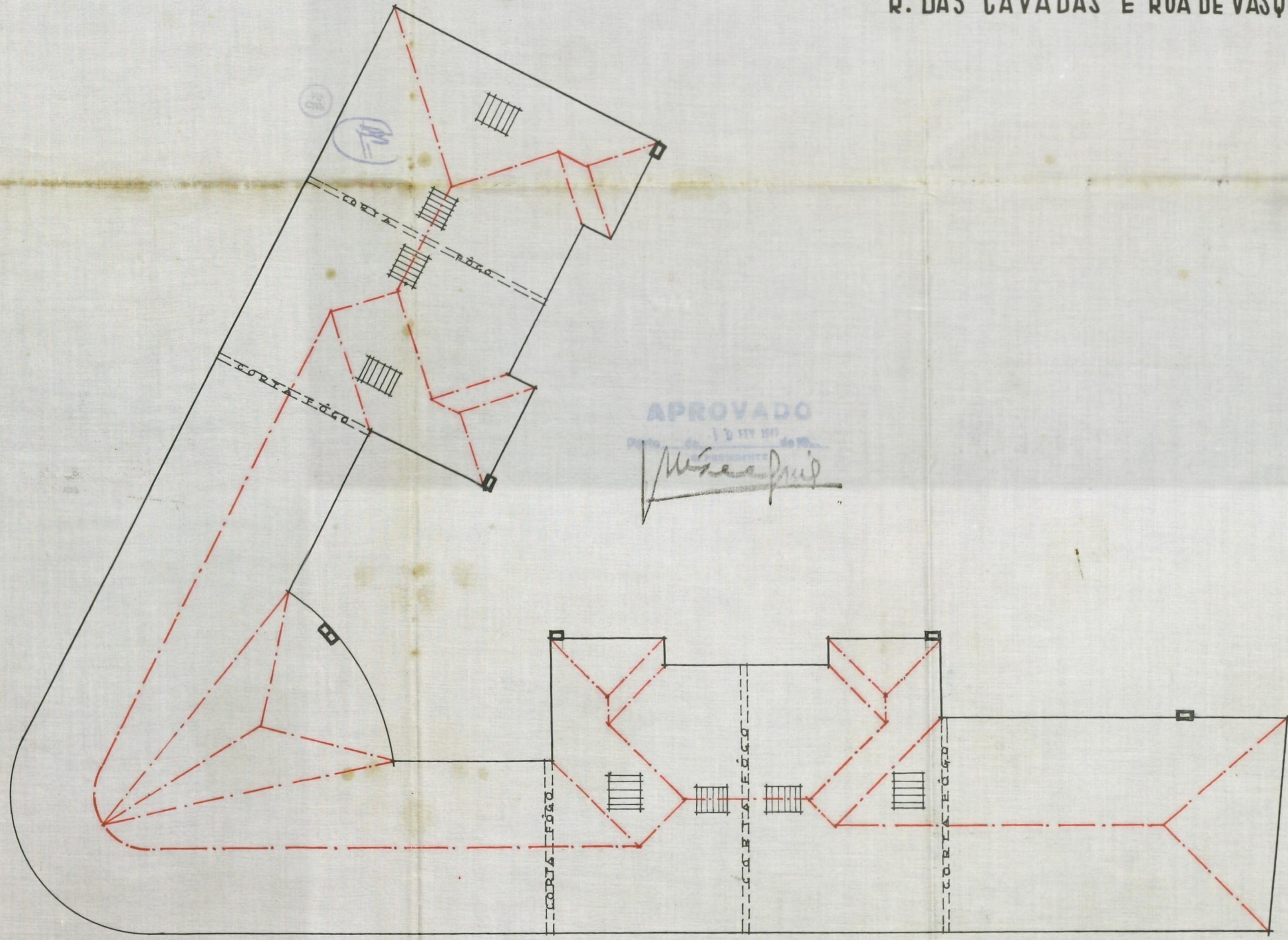


ESCALA: 0,01 P.M.

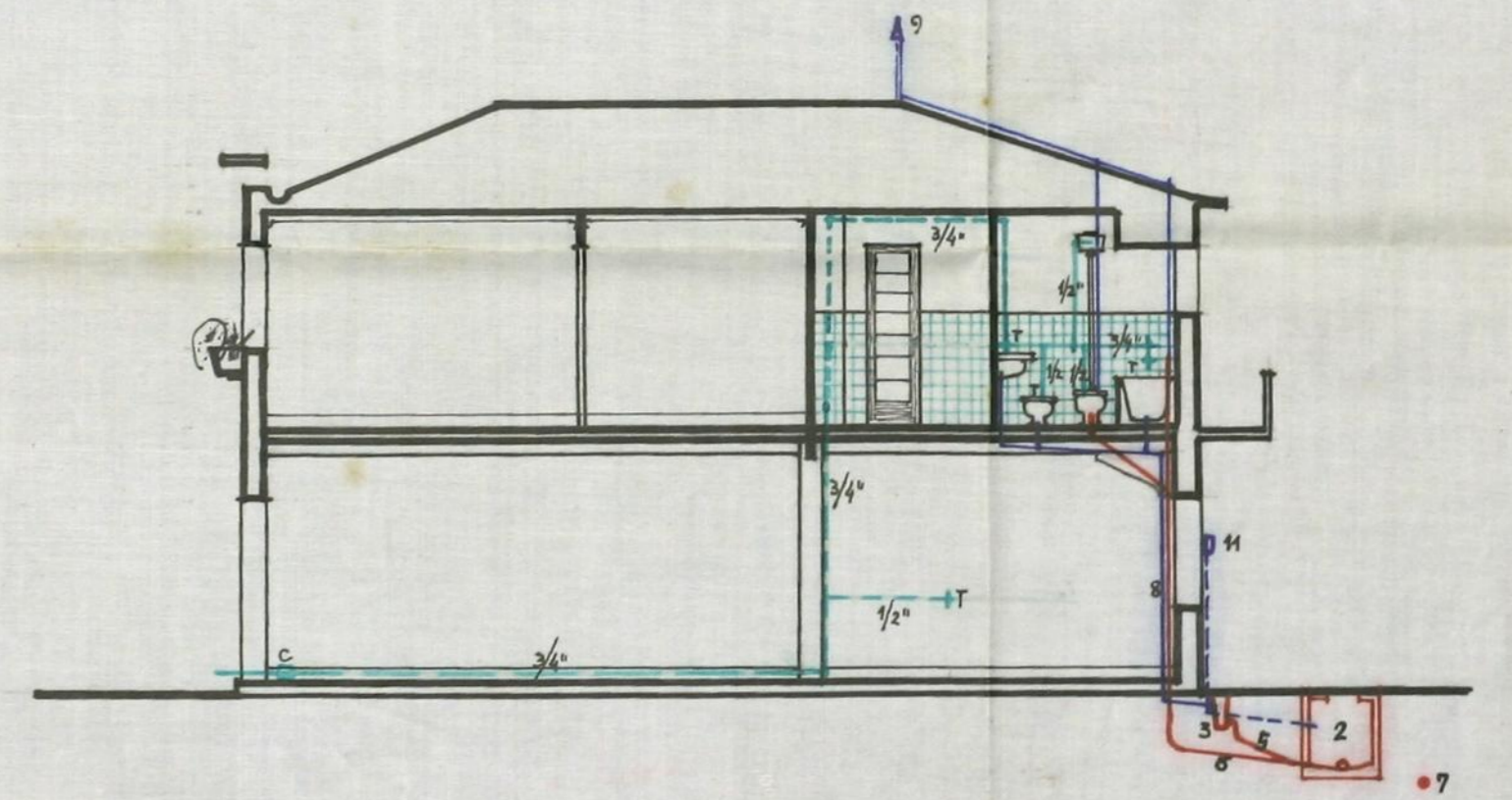
D. MARIA DA GLORIA SILVA ROCHA E OUTROS  
R. DAS CAVADAS E RUA DE VASQUES DE MESQUITA

5

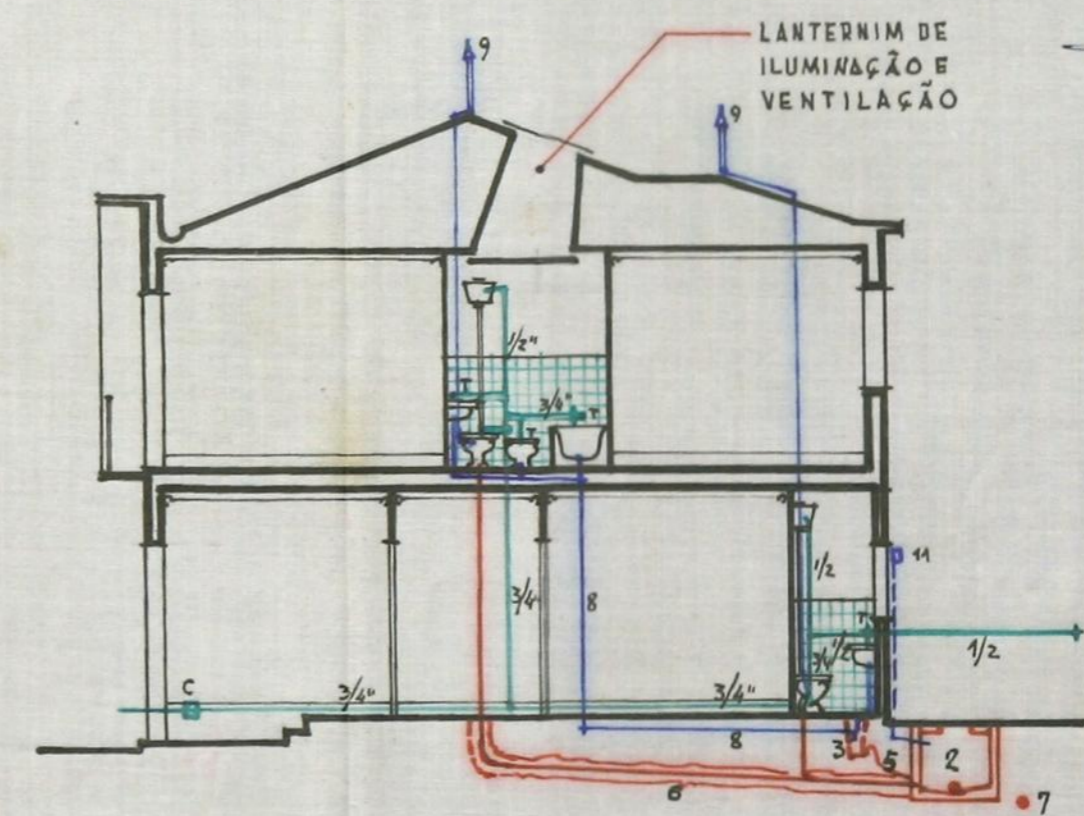


APROVADO  
13 DE JUNHO DE 1950  
*W. Soares*

PLANTA DAS COBERTURAS



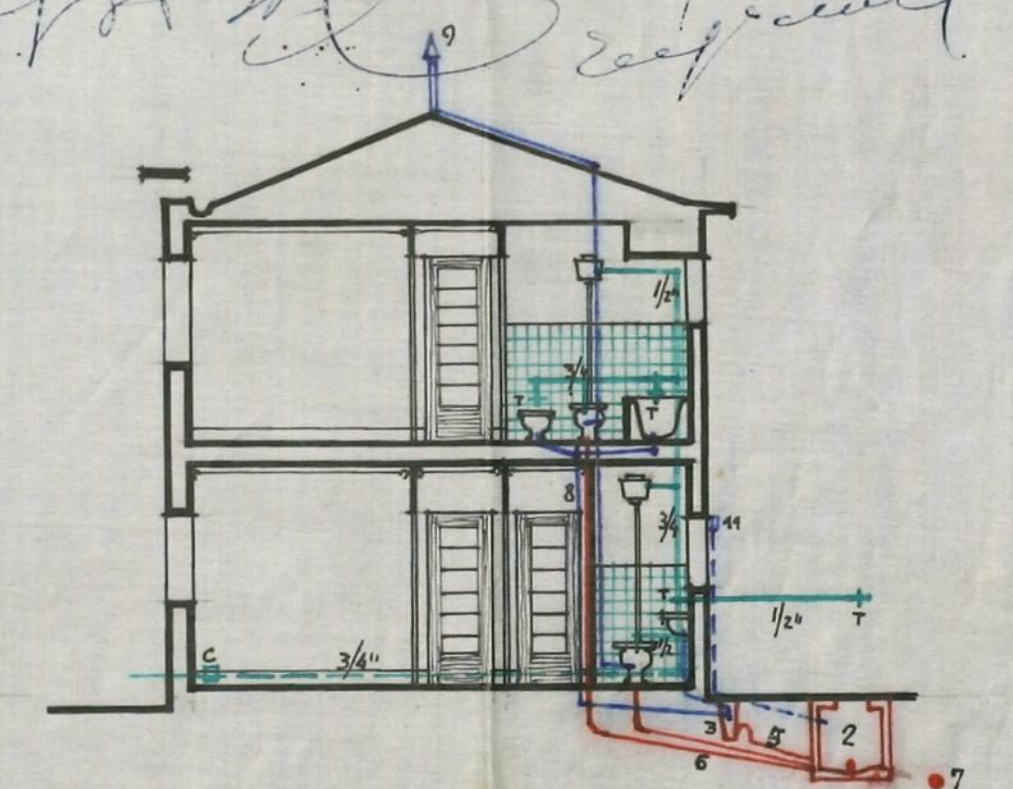
CORTE A.B.



CORTE C.D.



*Antonio Neves Coimbra de Souza*



CORTE E.F.

ANTONIO NEVES  
ARQUITECTO  
COIMBRA DE SOUZA  
ENGENHEIRO