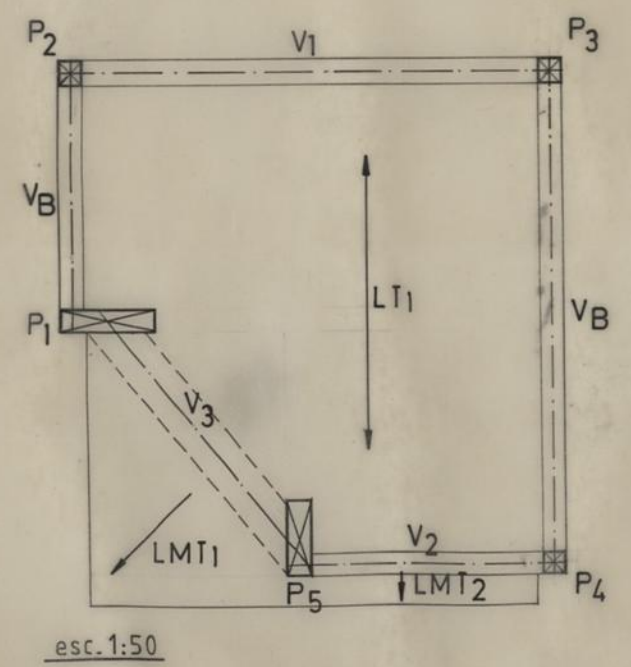
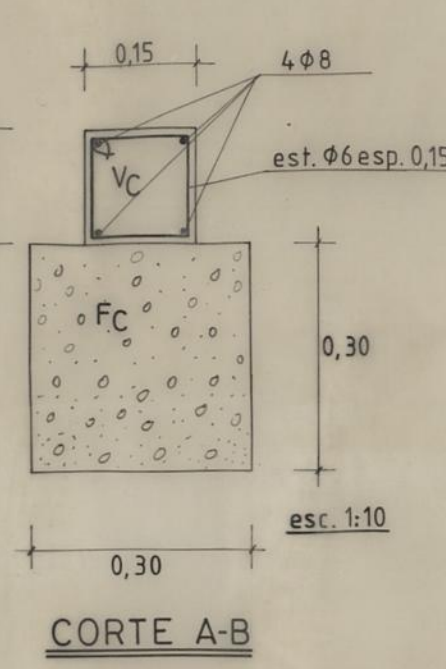


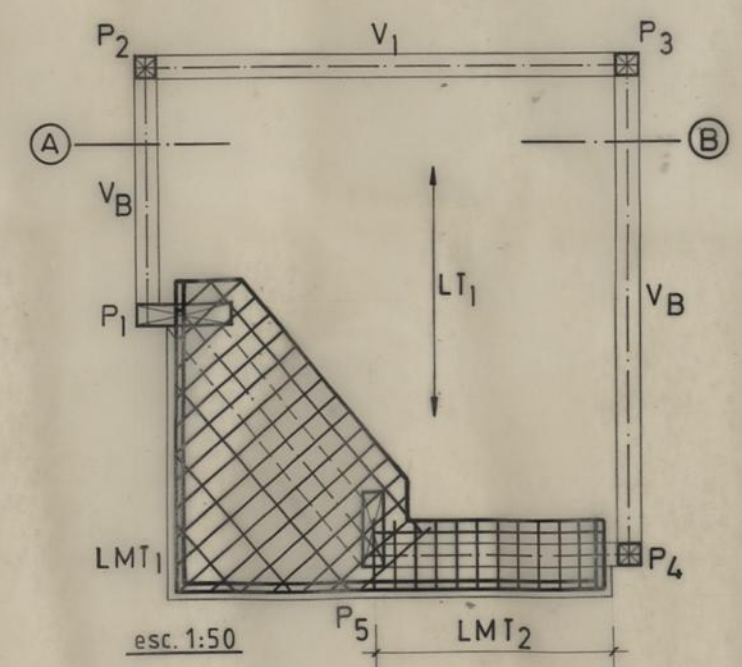
FUNDAÇÕES



PLANTA ESTRUTURAL



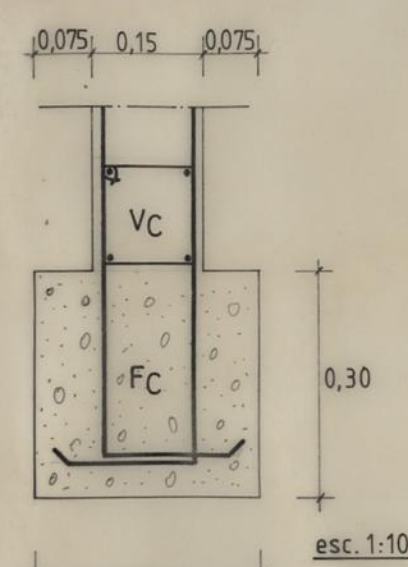
CORTE A-B



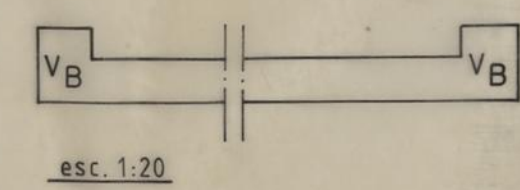
PORMENOR LMT1/LMT2

PILARES		
P1	P2;P3;P4	P5
AL = 8 #10 AT = #6 af. 0,12	AL = 4 #10 AT = #6 af. 0,12	AL = 8 #10 AT = #6 af. 0,12
esc. 1:10		esc. 1:10

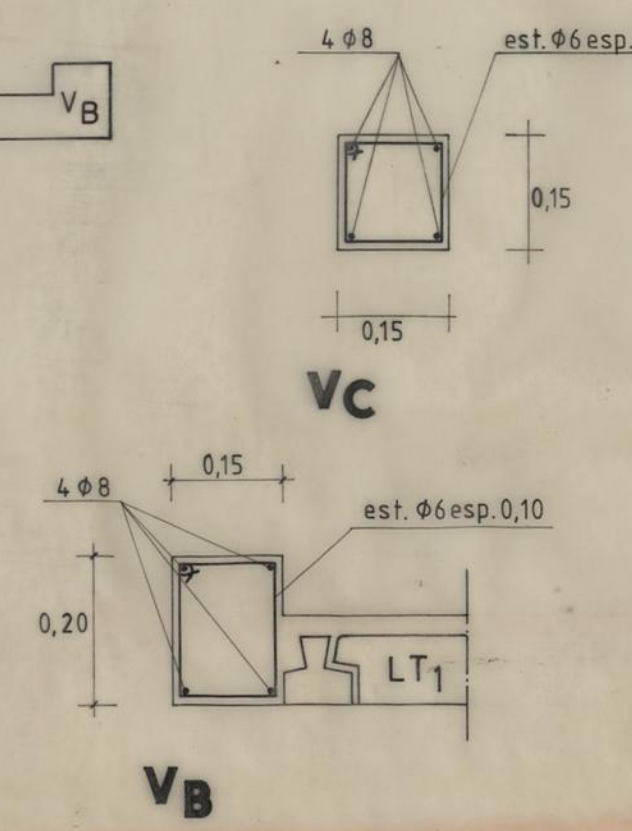
LAGE ALIGEIRADA						
TECTO	DESIGNA.	VÃO	LAGE A EMPREGAR	ALTURA TOTAL	ARMADURA DE DISTRIBUIÇÃO	ARMADURA DE SOLIDARIZA.
	LT1	Variável	MAPREL T-3-2	9 + 3	MALHASOL CQ 30	2 TARUGOS 1#10 cada



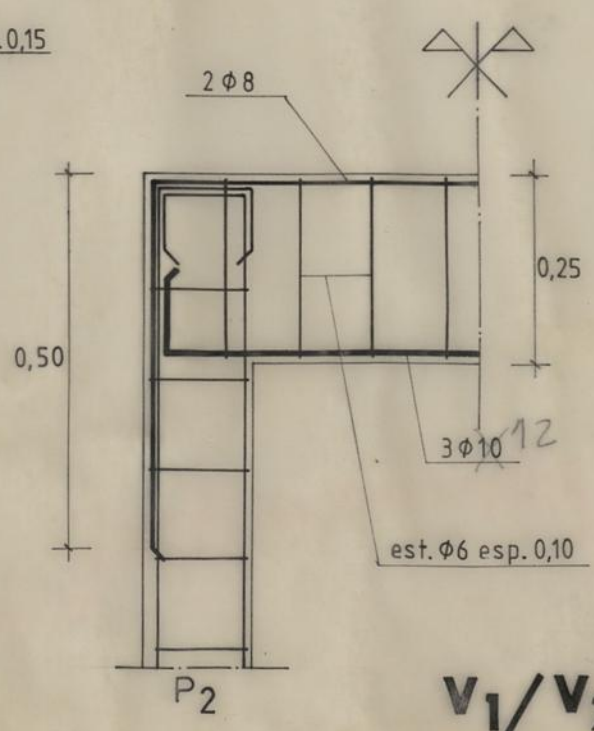
LIGAÇÃO PILAR FUNDAÇÃO



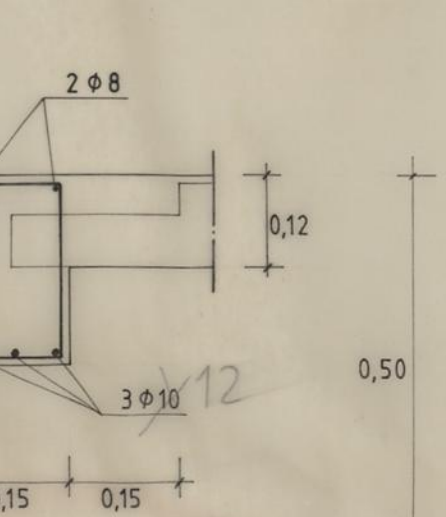
CORTE A-B



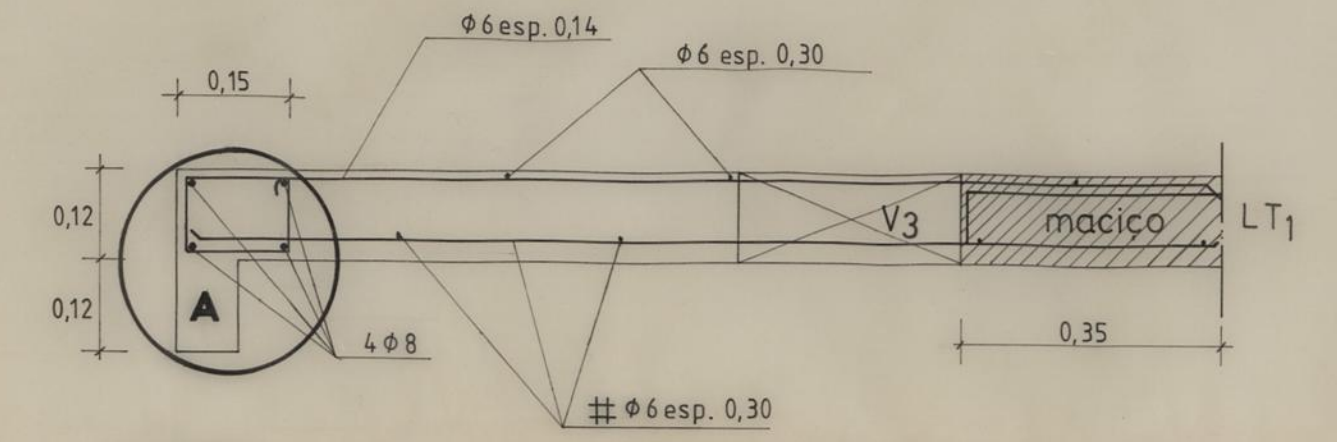
VC



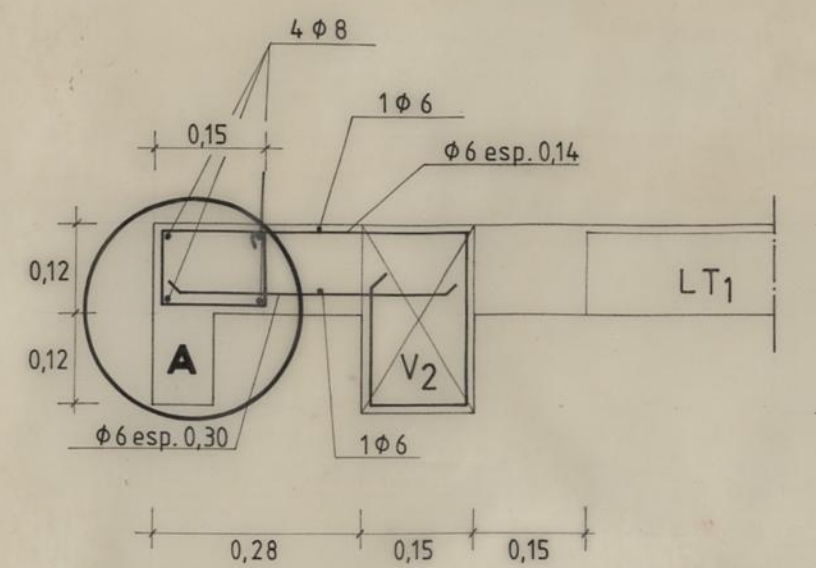
V1/V2



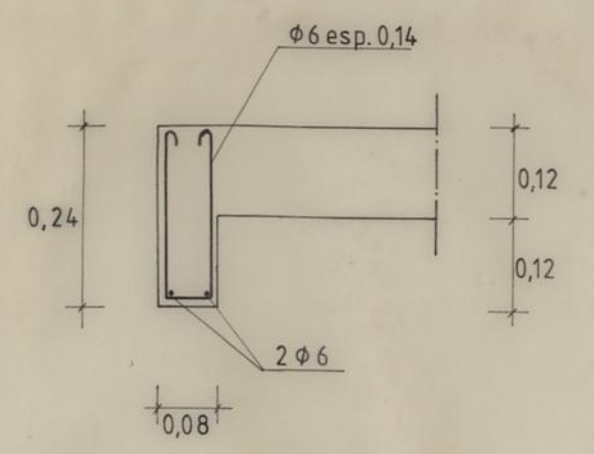
V3



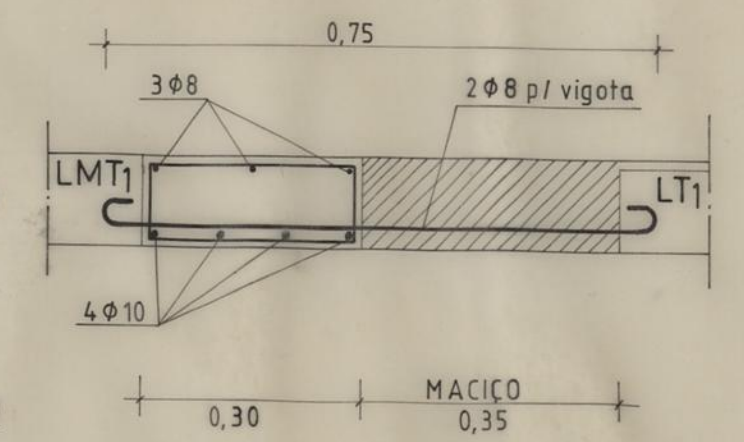
LMT1



LMT2



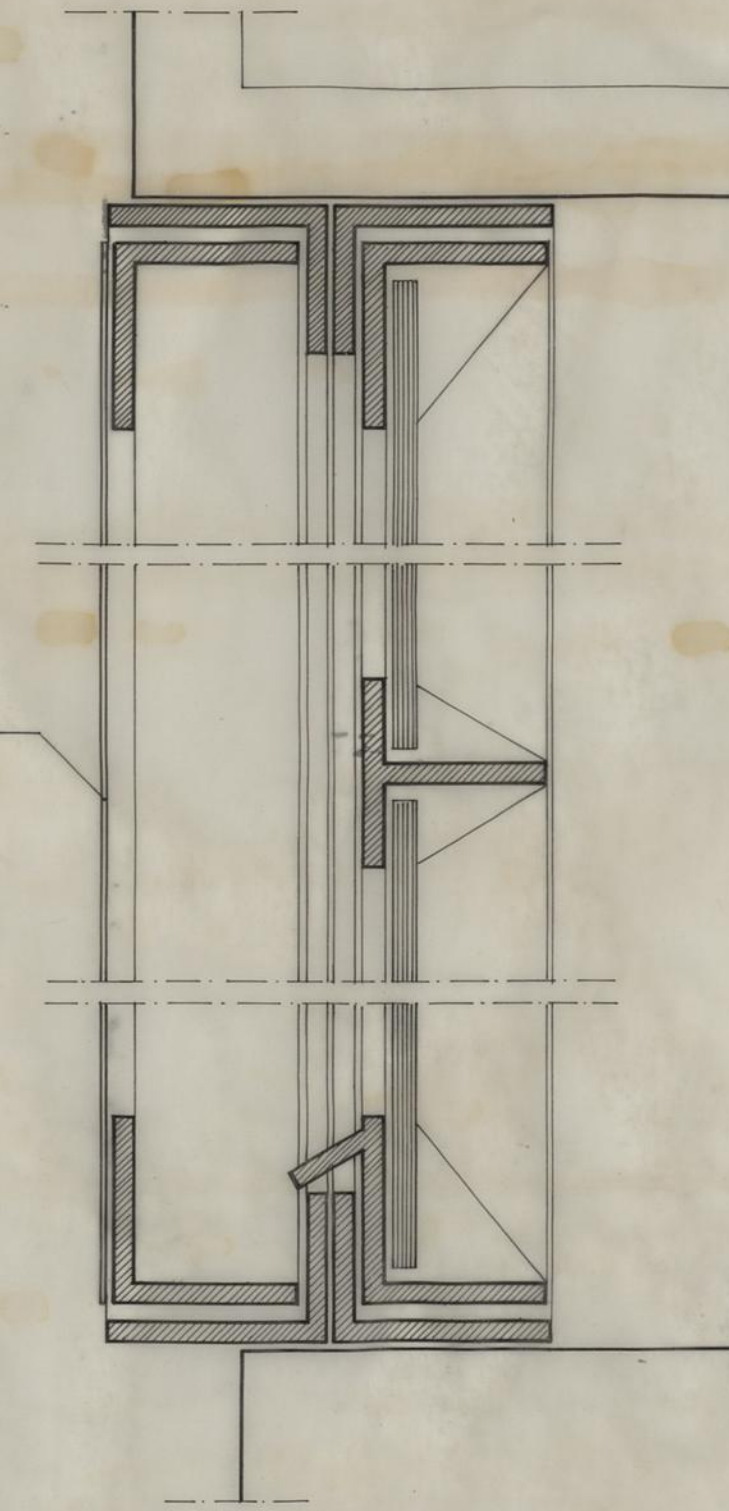
PORMENOR A



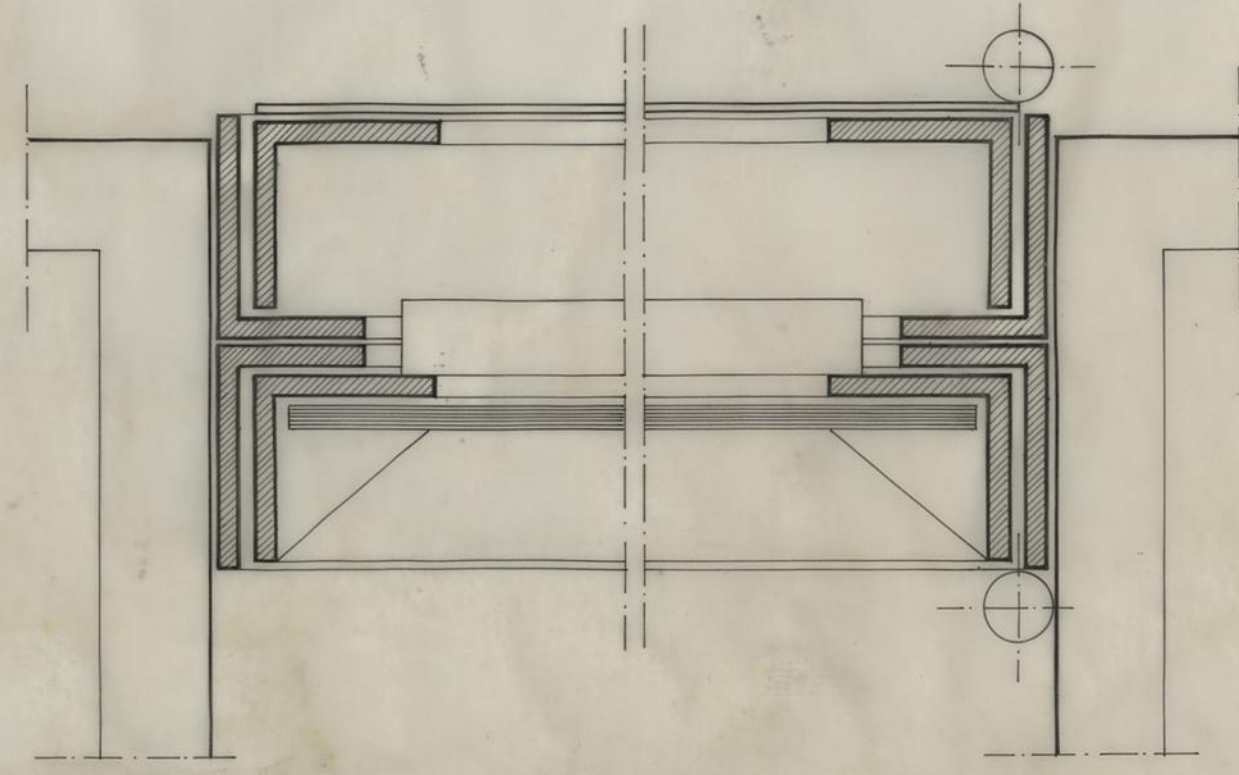
B 15
A 400 NR

QUIOSQUE TIPO		CAMARA MUNICIPAL DO PORTO	
BETÃO ARMADO		DIRECÇÃO DOS SERVIÇOS DE OBRAS D.C.C.	
O CHEFE, <i>B. Soares</i>		DESENHO, <i>Paulo Soares</i>	
		PROJECTO, <i>J. Costa</i>	
ESCALAS		DESENHO N.º	
1/10 1/20 1/50			
ANULADO		SUBSTITUÍDO	
		DATA JANEIRO DE 1989	

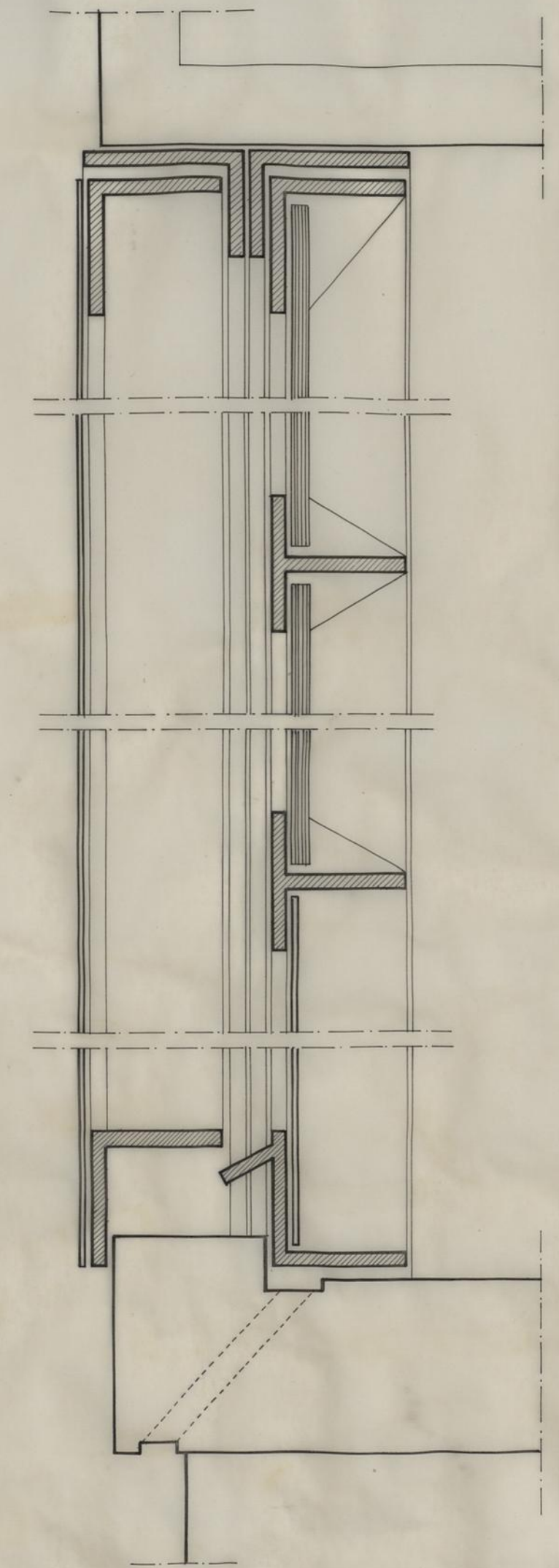
CHAPA BG nº16



CORTE VERTICAL - JANELA



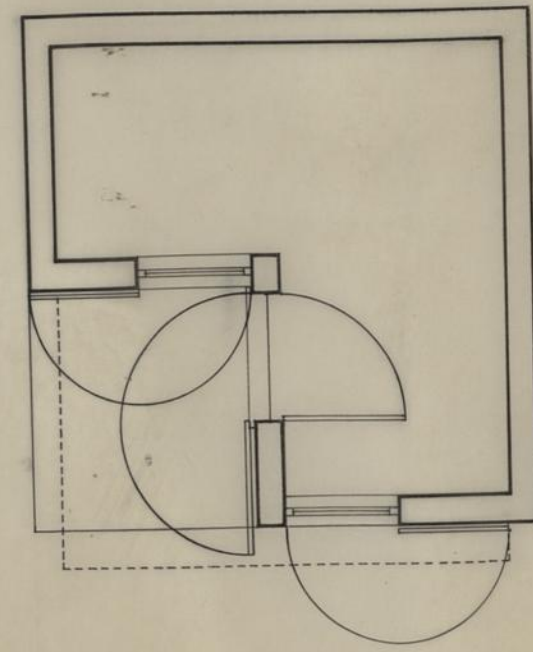
CORTE HORIZONTAL - JANELA



CORTE VERTICAL - PORTA

QUIOSQUE TIPO		CAMARA MUNICIPAL DO PORTO	
PORMENORES		DIRECÇÃO DOS SERVIÇOS DE OBRAS D. C. C.	
CAIXILHARIA EXTERIOR		DESENHO N.º	2
CHEFE:		DESENHOU:	ANULADO
PROJECTOU:		PROJECTOU:	SUBSTITUÍDO
		DATA	AGOSTO 1989

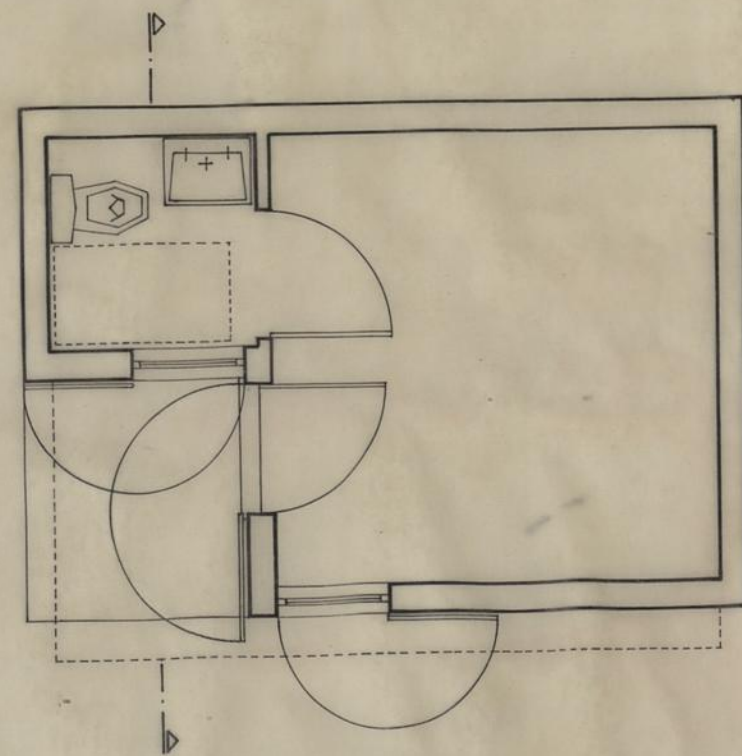
PLANTAS



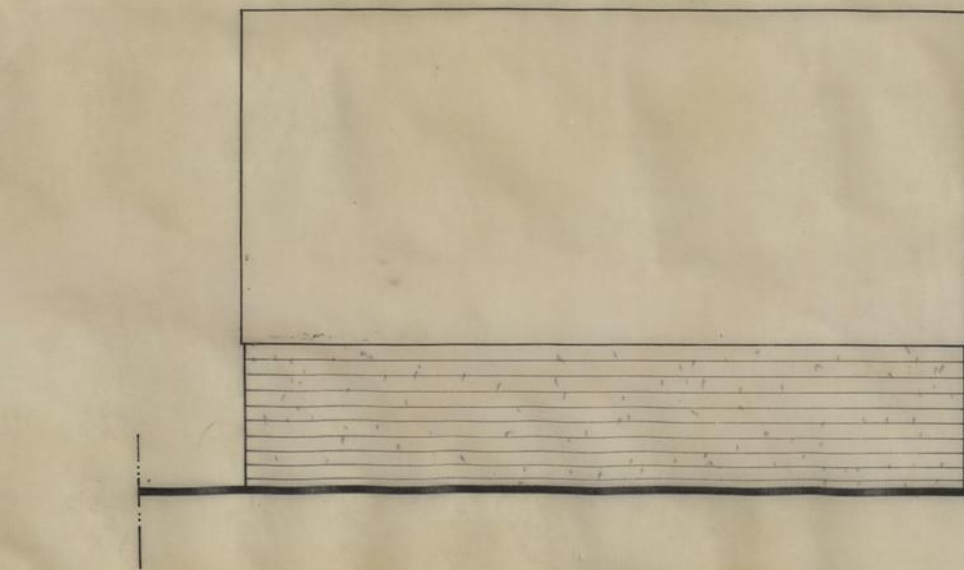
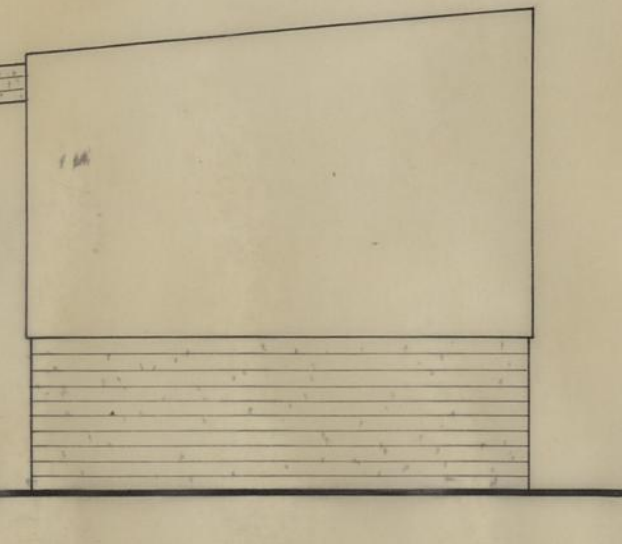
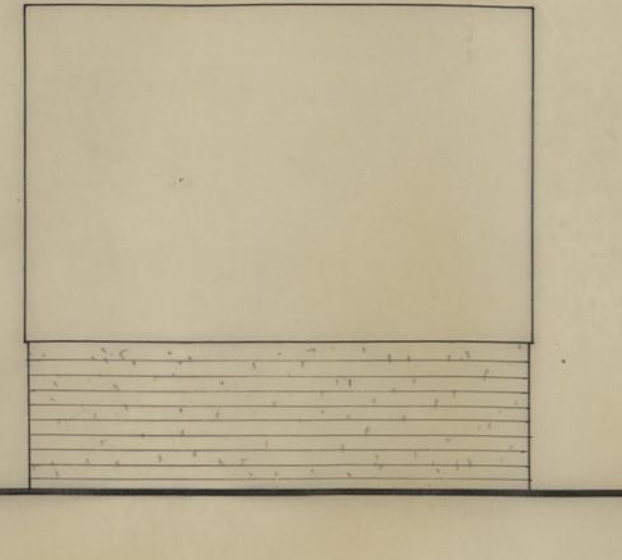
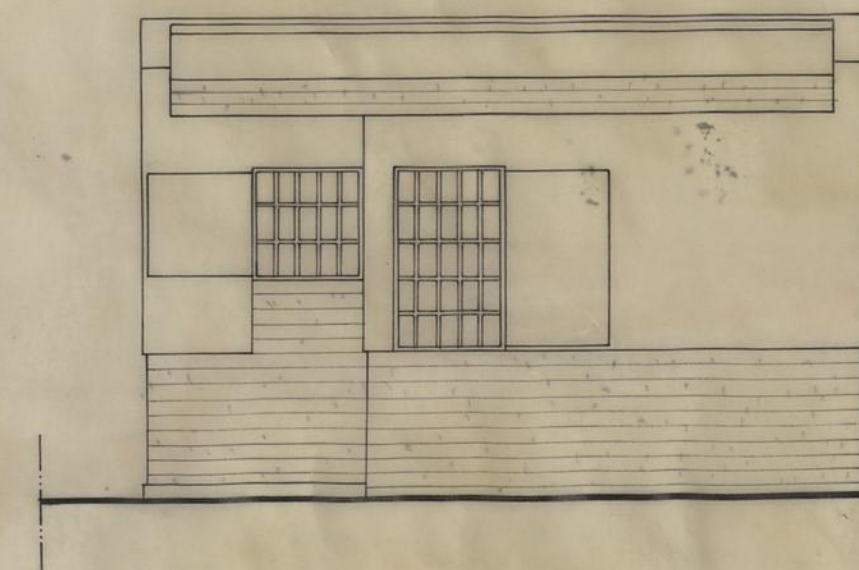
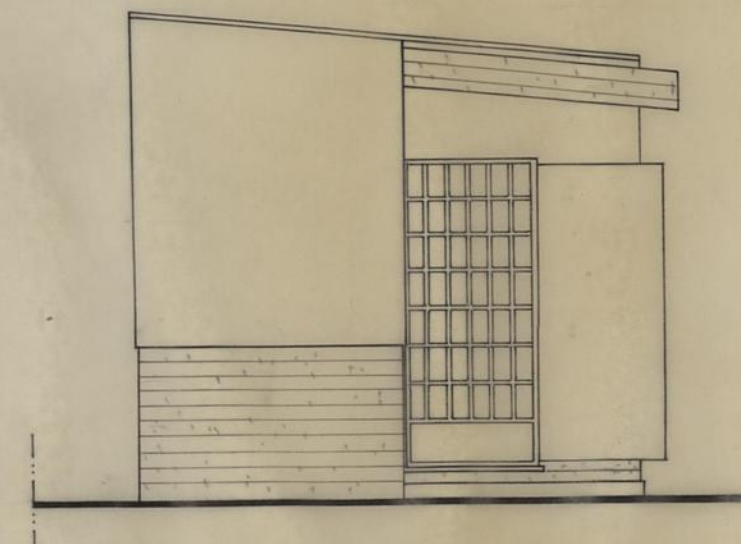
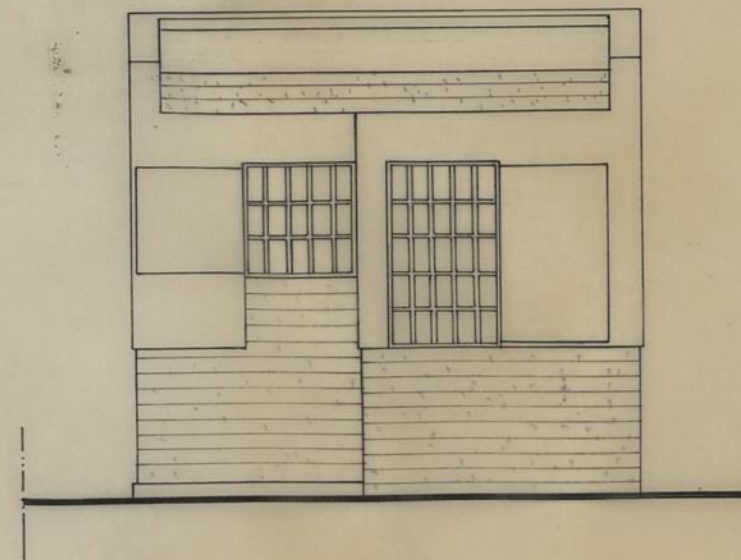
MÓDULO A

MODULOS A/B

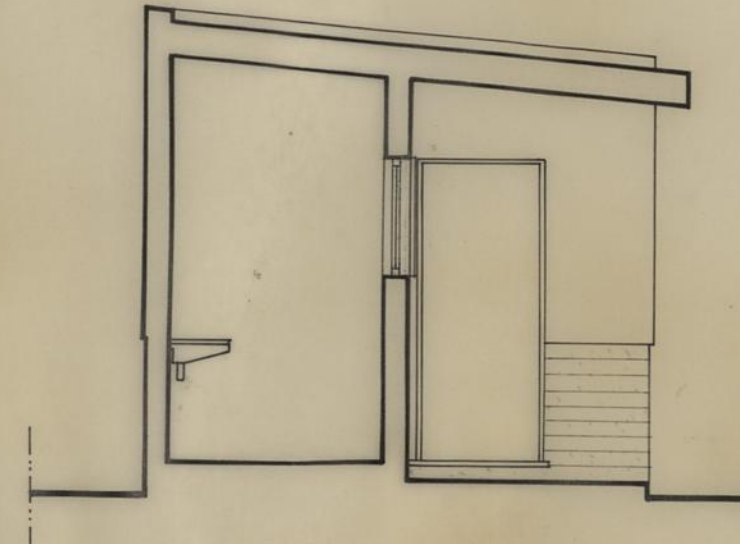
MÓDULO B



ALÇADOS

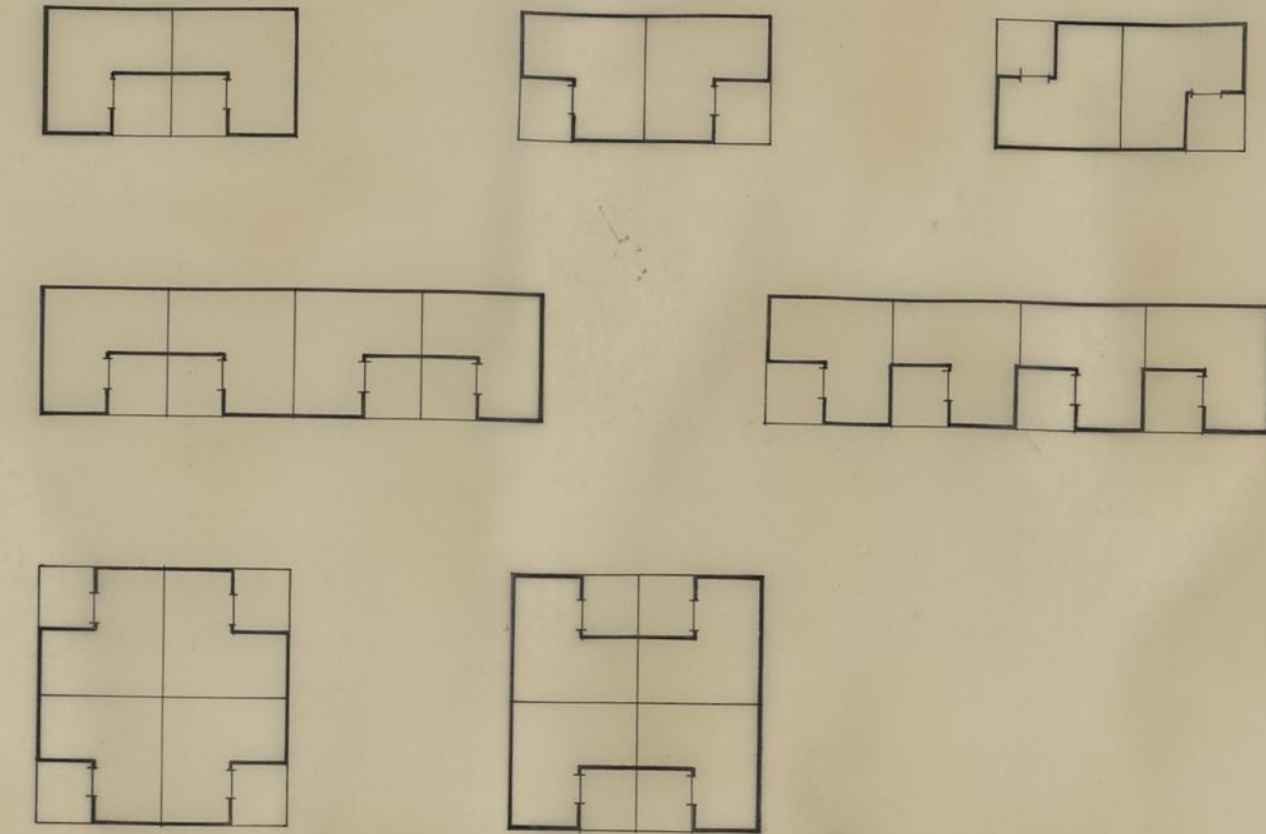


CORTE

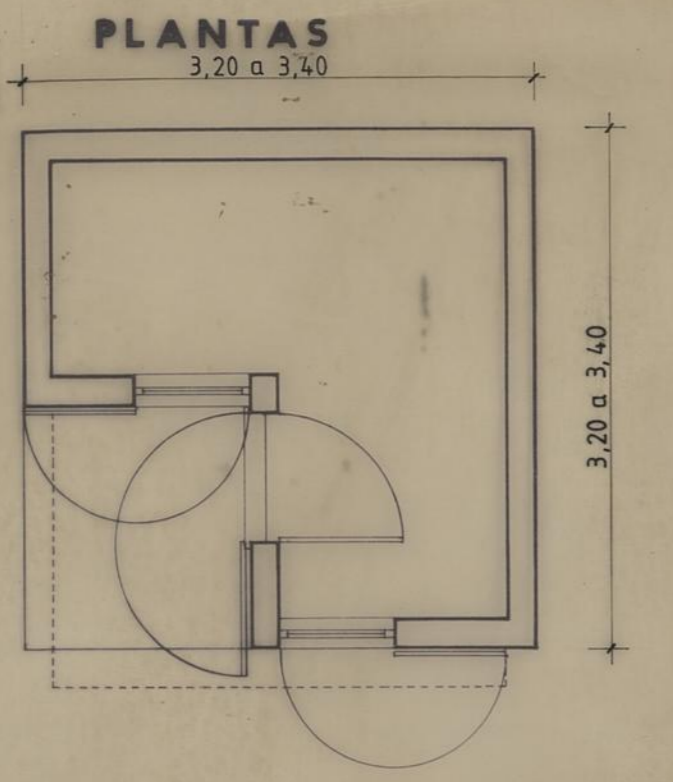


CONJUNTOS DE 2/4 MÓDULOS (A)

Escala . 1:200



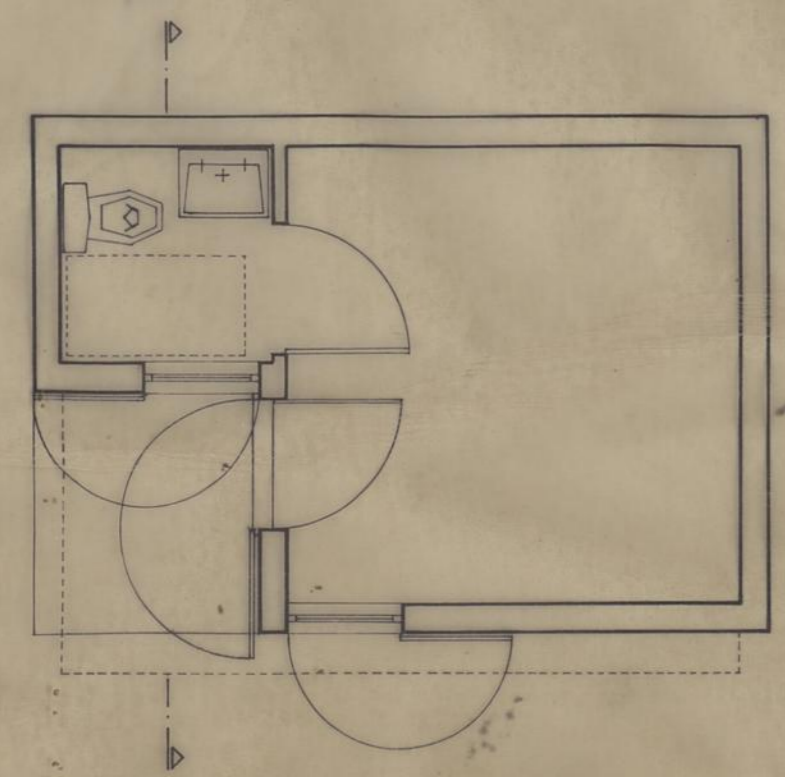
QUIOSQUE TIPO		CAMARA MUNICIPAL DO PORTO	
ARQUITECTURA		DIRECÇÃO DOS SERVIÇOS DE OBRAS D. C. C.	
		DESENHO N.º	
		ESCALAS 1:200 , 1:50	
		ANULADO	
		SUBSTITUÍDO	
		DATA JULHO 1988	
O CHEFE,	DESENHOU,		
<i>Reis</i>	<i>João Luís Costa</i>		
	PROJECTOU,		
	<i>Luís</i>		



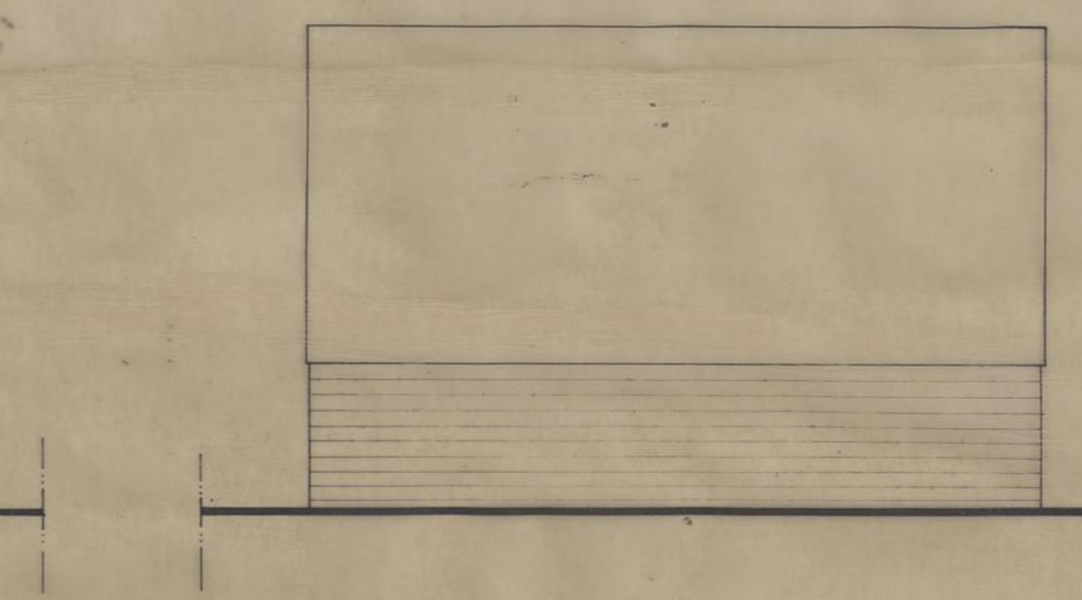
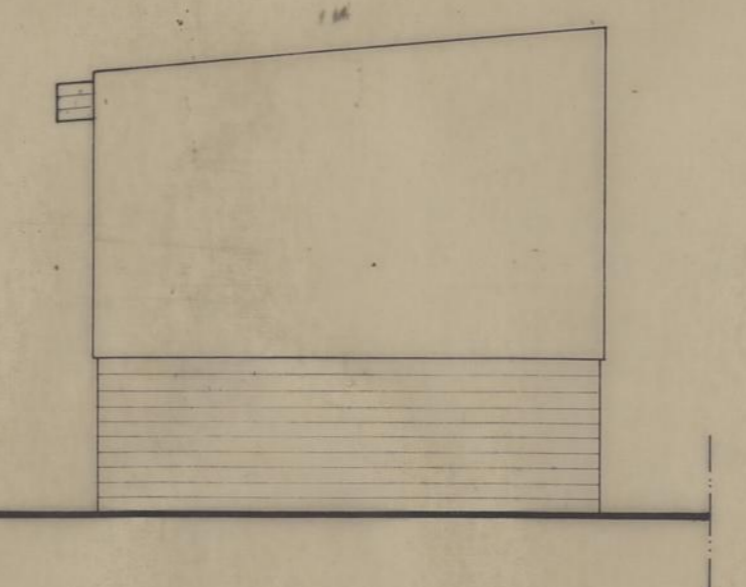
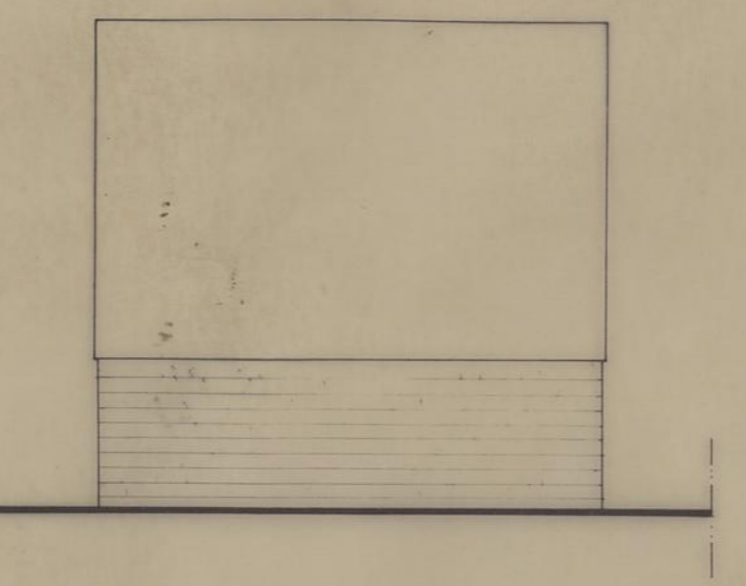
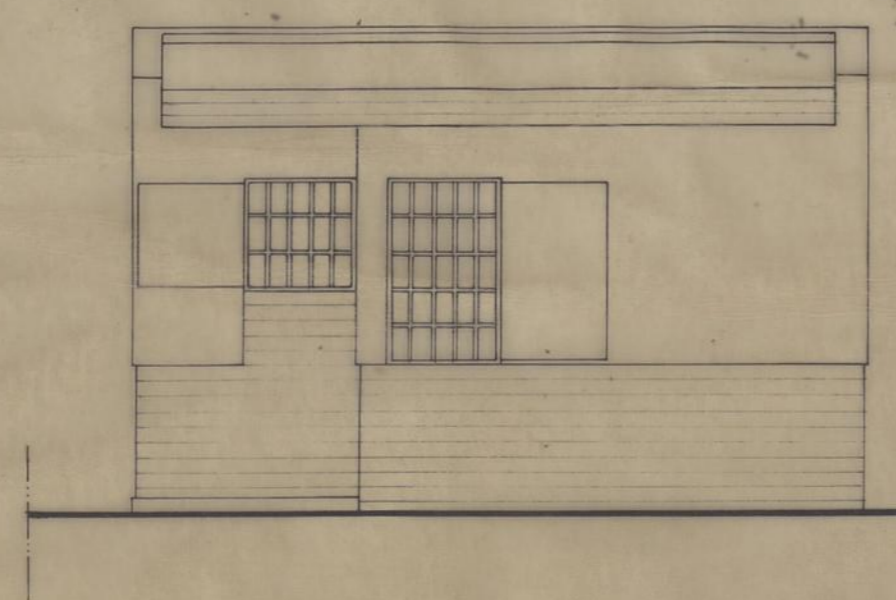
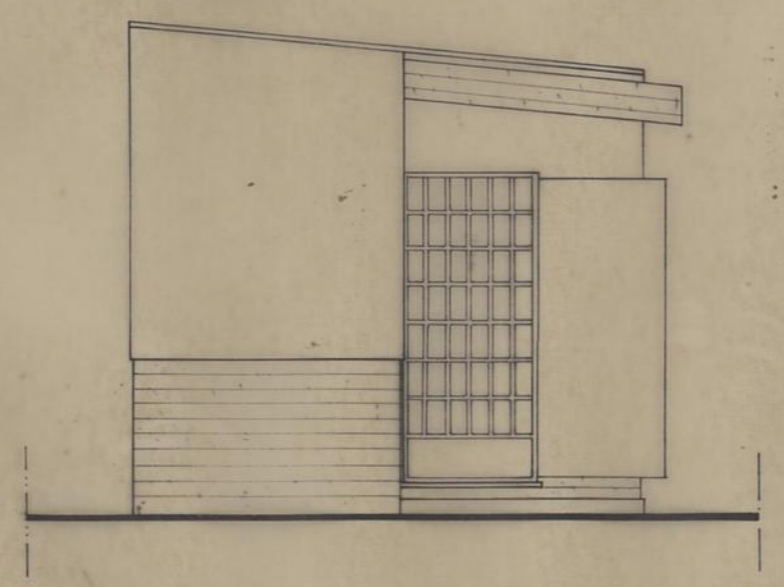
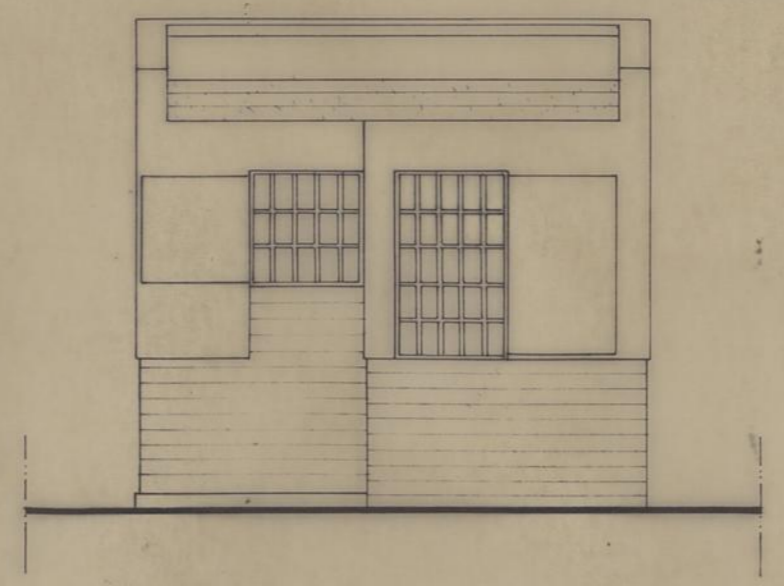
MÓDULO A
▲

MODULOS A/B →

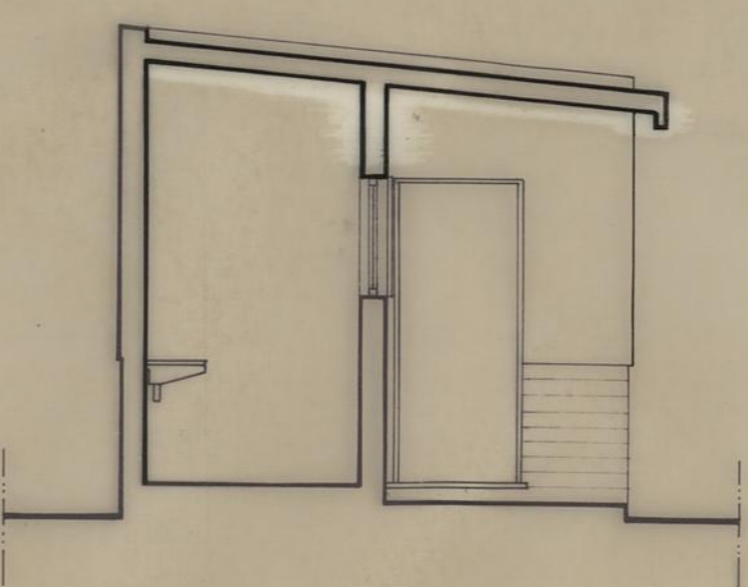
MÓDULO B
▼



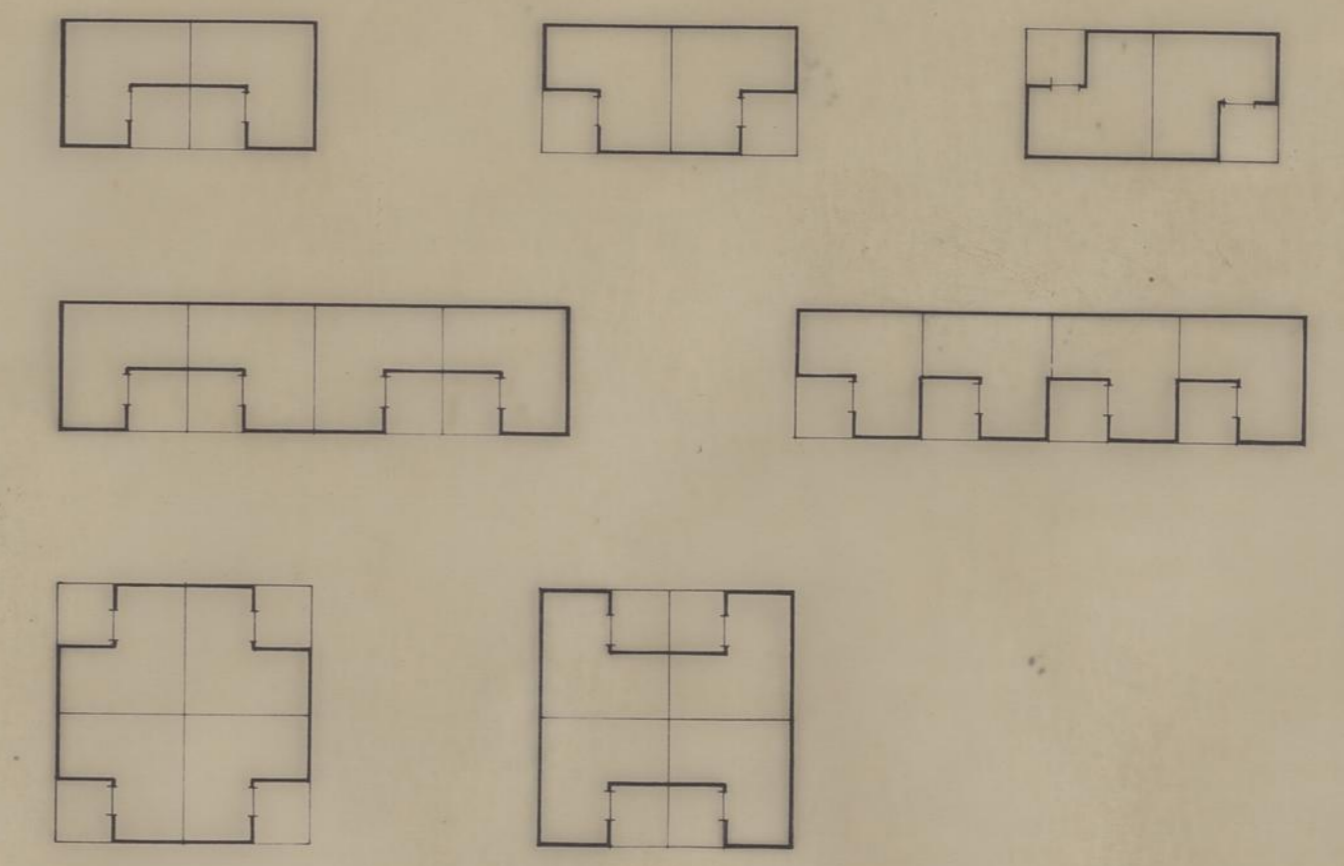
ALÇADOS



CORTE



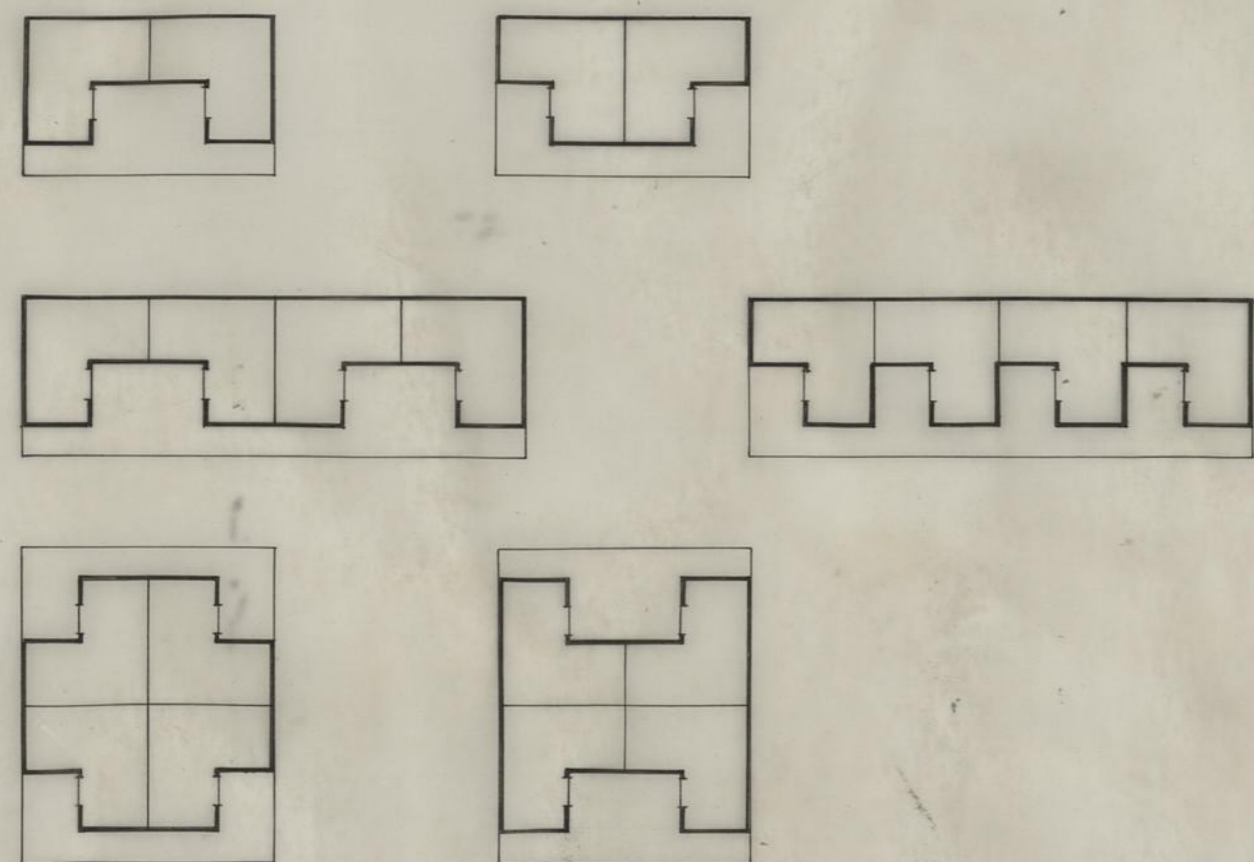
CONJUNTOS DE 2/4 MÓDULOS (A)
Escala . 1:200



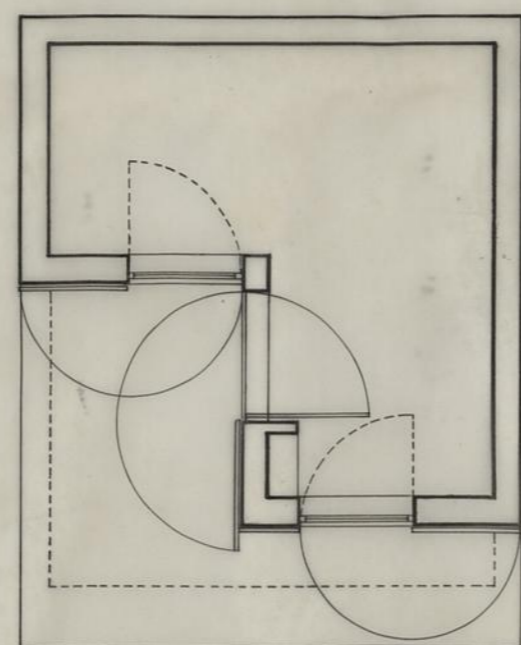
QUIOSQUE TIPO		CAMARA MUNICIPAL DO PORTO	
ARQUITECTURA		DIRECÇÃO DOS SERVIÇOS DE OBRAS D. C. C.	
DESENHO N.º		DESENHO N.º	
ESCALAS		ESCALAS	
1:200, 1:50		1:200, 1:50	
O CHEFE	DESENHOU	alterou:	
<i>[Signature]</i>	<i>[Signature]</i>	<i>[Signature]</i>	<i>[Signature]</i>
	PROJECTOU		
	<i>[Signature]</i>		
		ANULADO	
		SUBSTITUÍDO	
		DATA	JULHO 1988

CONJUNTOS DE 2/4 MÓDULOS (A)

Escala: 1:200



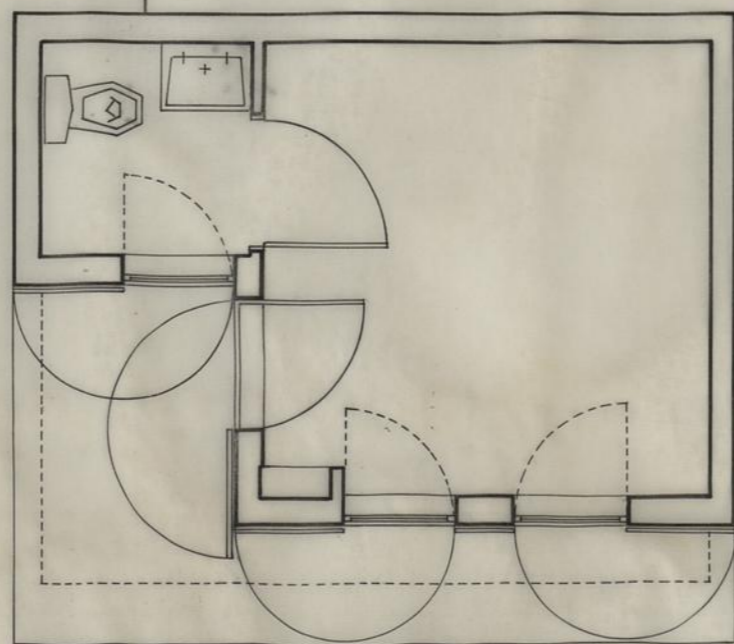
PLANTAS



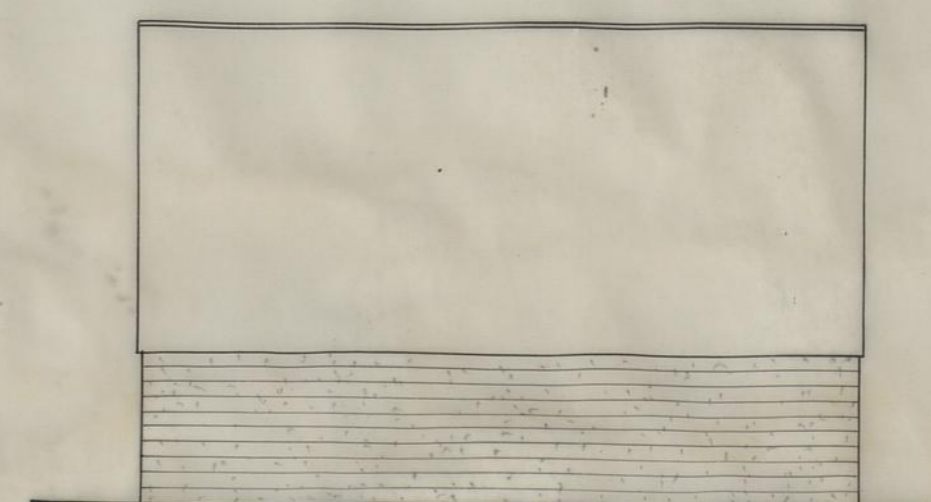
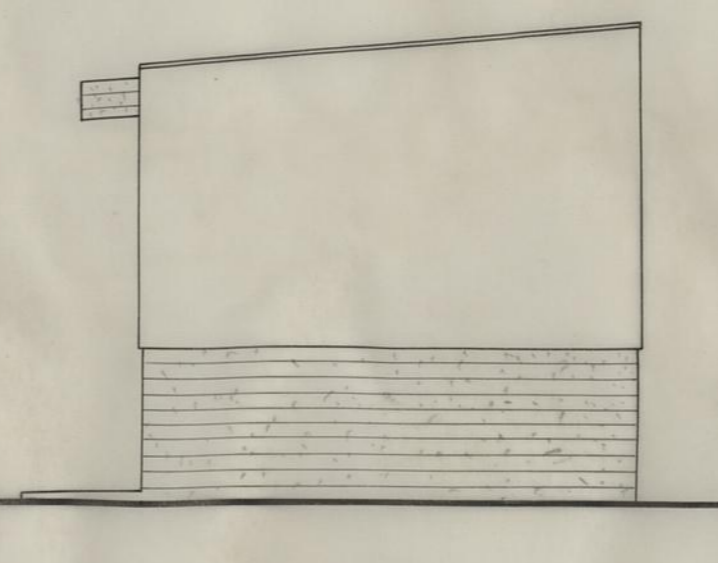
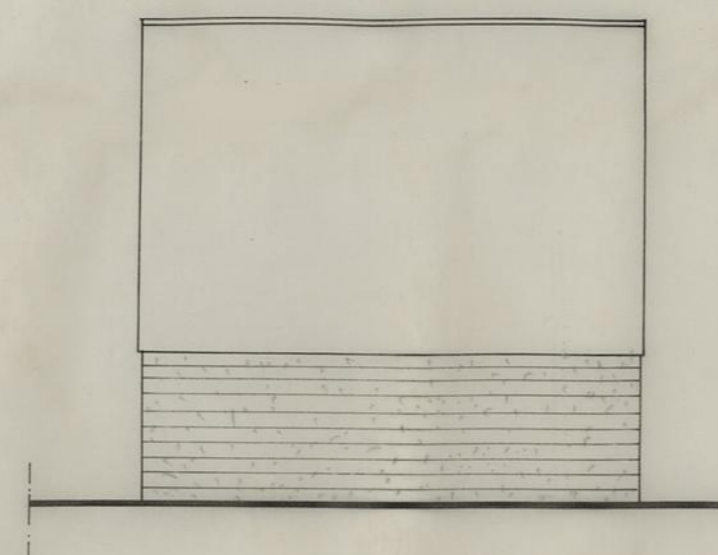
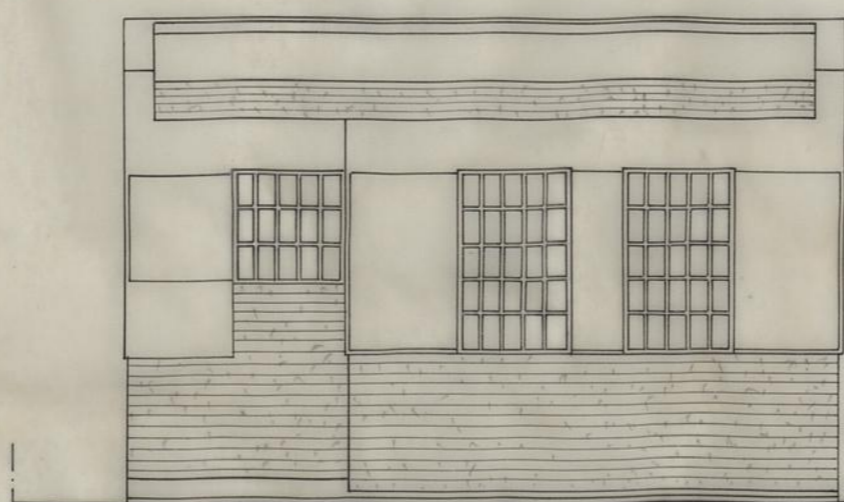
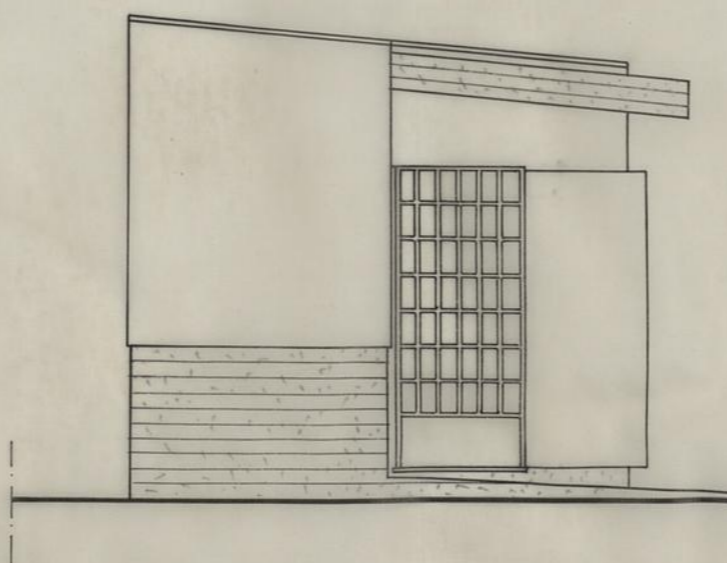
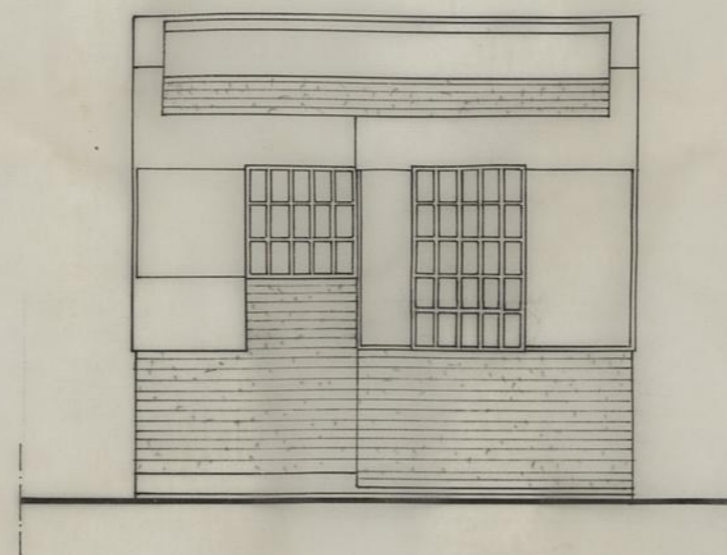
MÓDULO A

MÓDULOS A/B

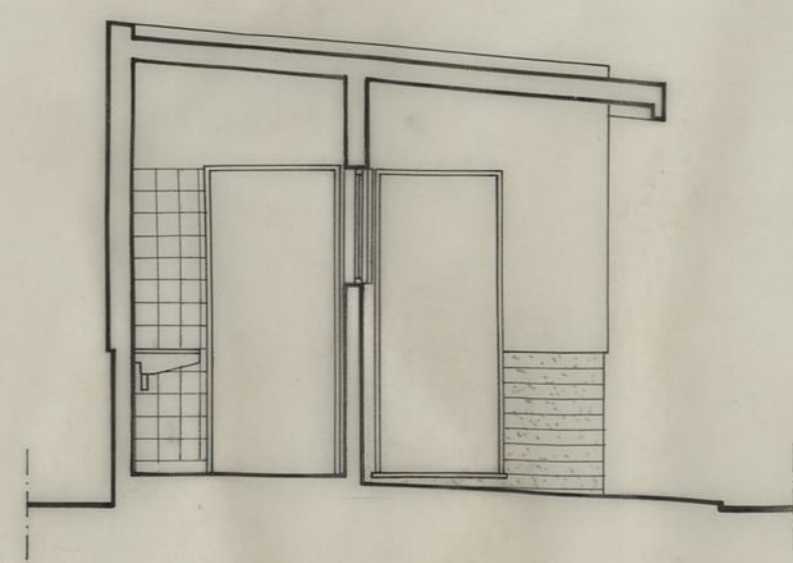
MÓDULO B



ALÇADOS



CORTE



QUIOSQUE TIPO		CAMARA MUNICIPAL DO PORTO	
ARQUITECTURA		DIRECÇÃO DOS SERVIÇOS DE OBRAS D.C.C.	
PLANTAS ALÇADOS E CORTE		DESENHO N.º	1
		ESCALAS	1:200, 1:50
O CHEFE.	DESENHOU.	PROJECTOU.	
<i>R. Pereira</i>	<i>António Duarte Costa</i>	<i>J. Mendes</i>	
		DATA	AGOSTO 1989