

748

PROJECTO A QUI SE DETEHE O REQUERIMENTO DO SR. JOSÉ ALVES.

APROVADO  
Pôrto, 4 de XI de 1938  
O PRESIDENTE

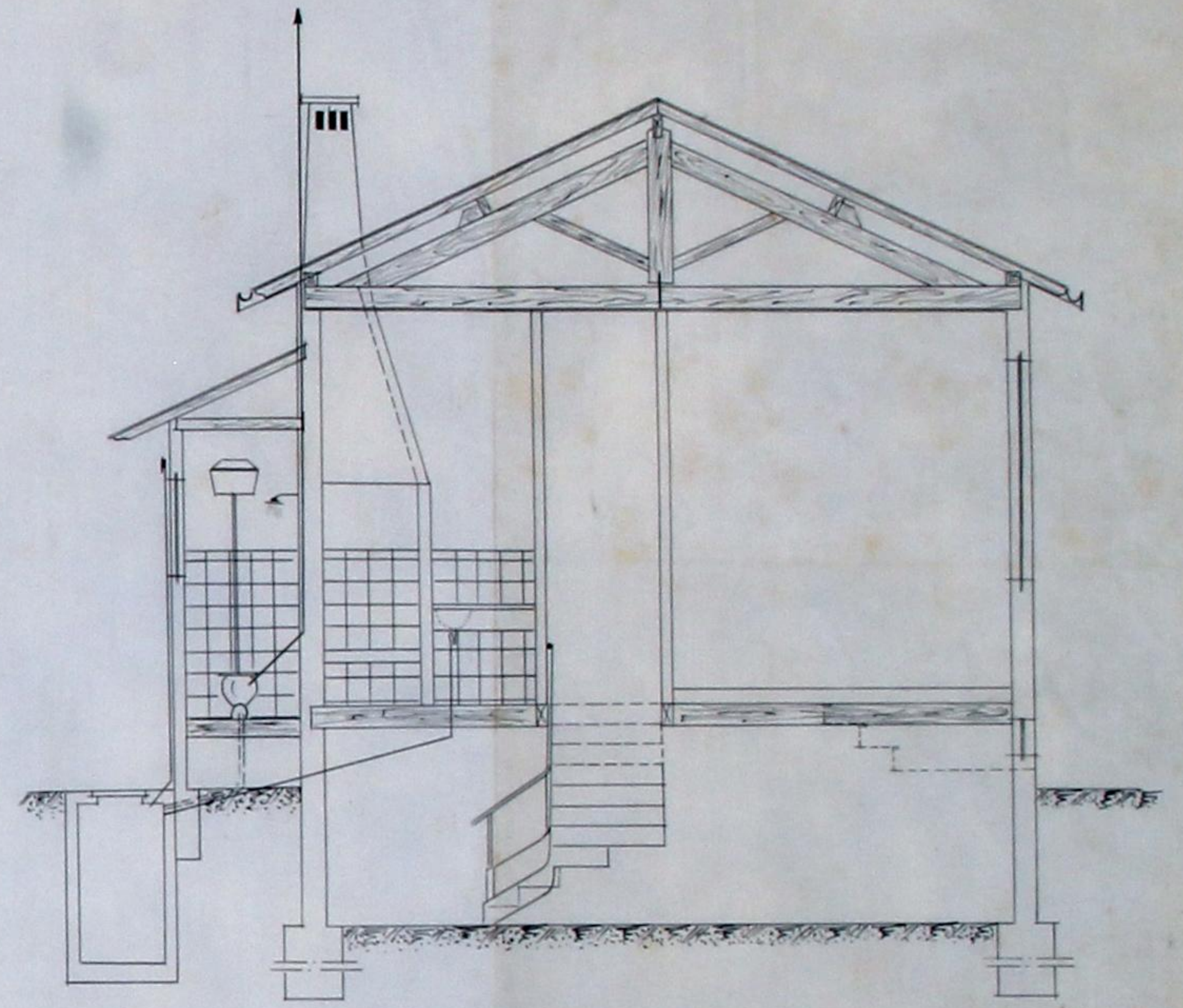
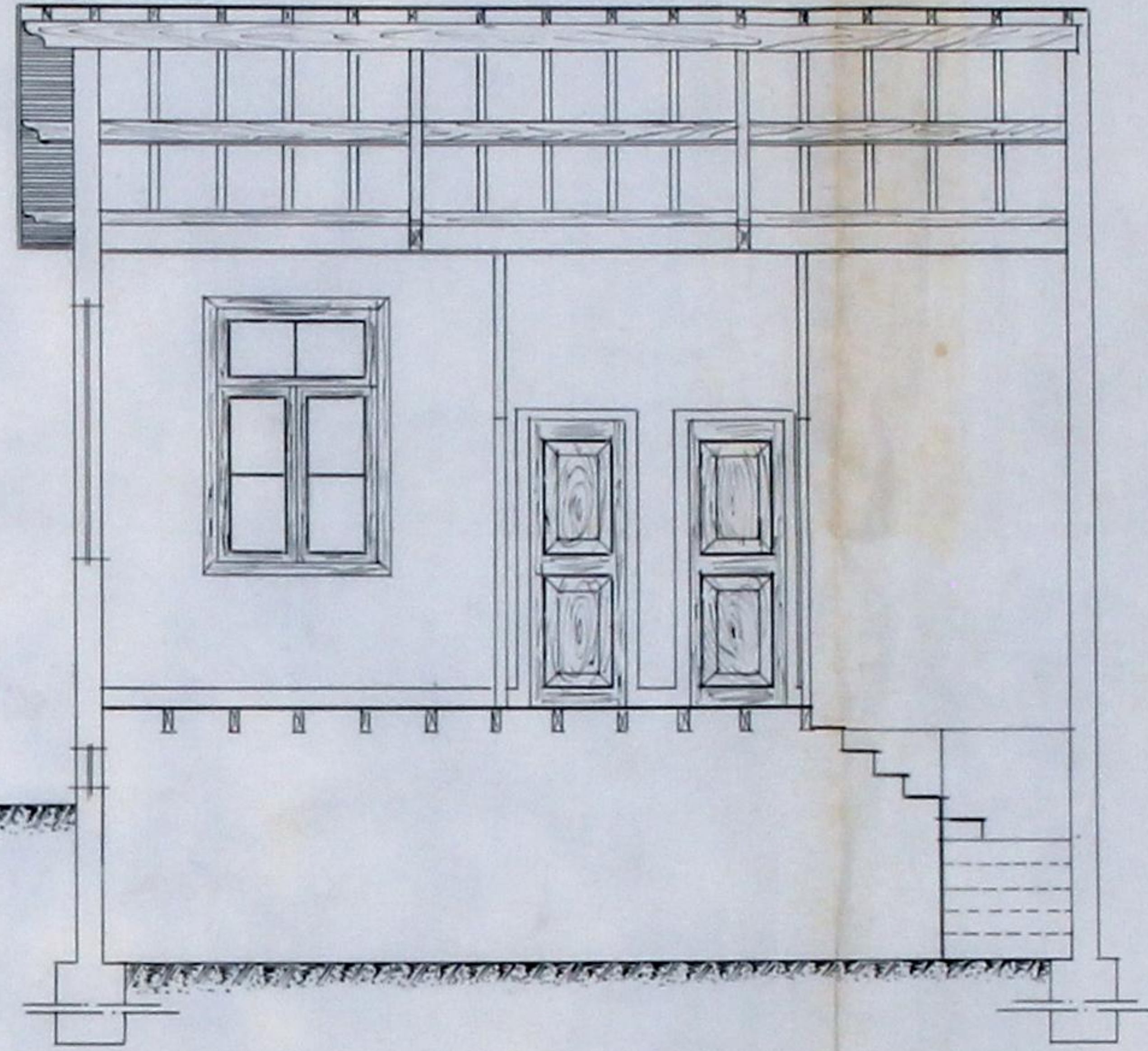
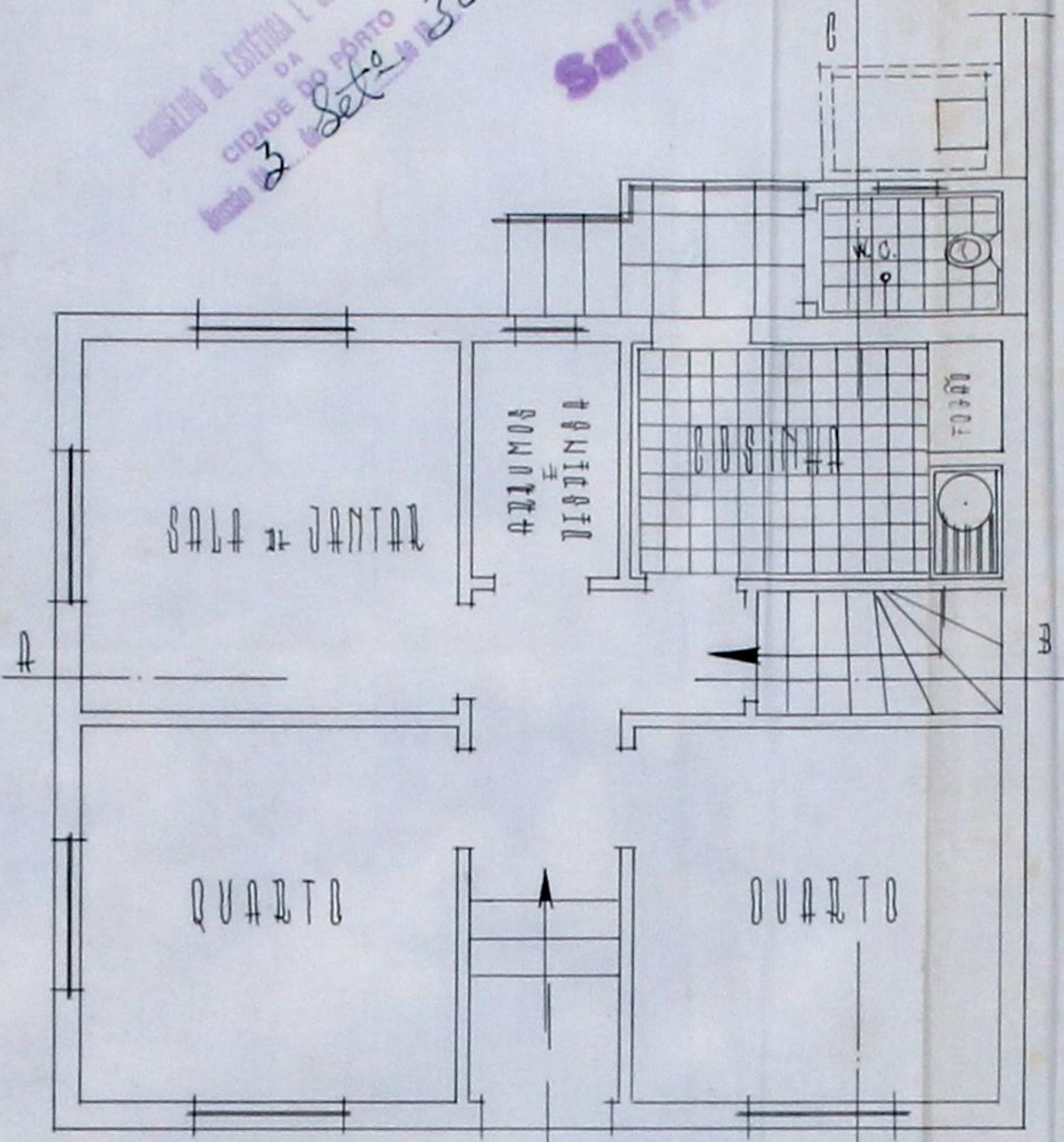
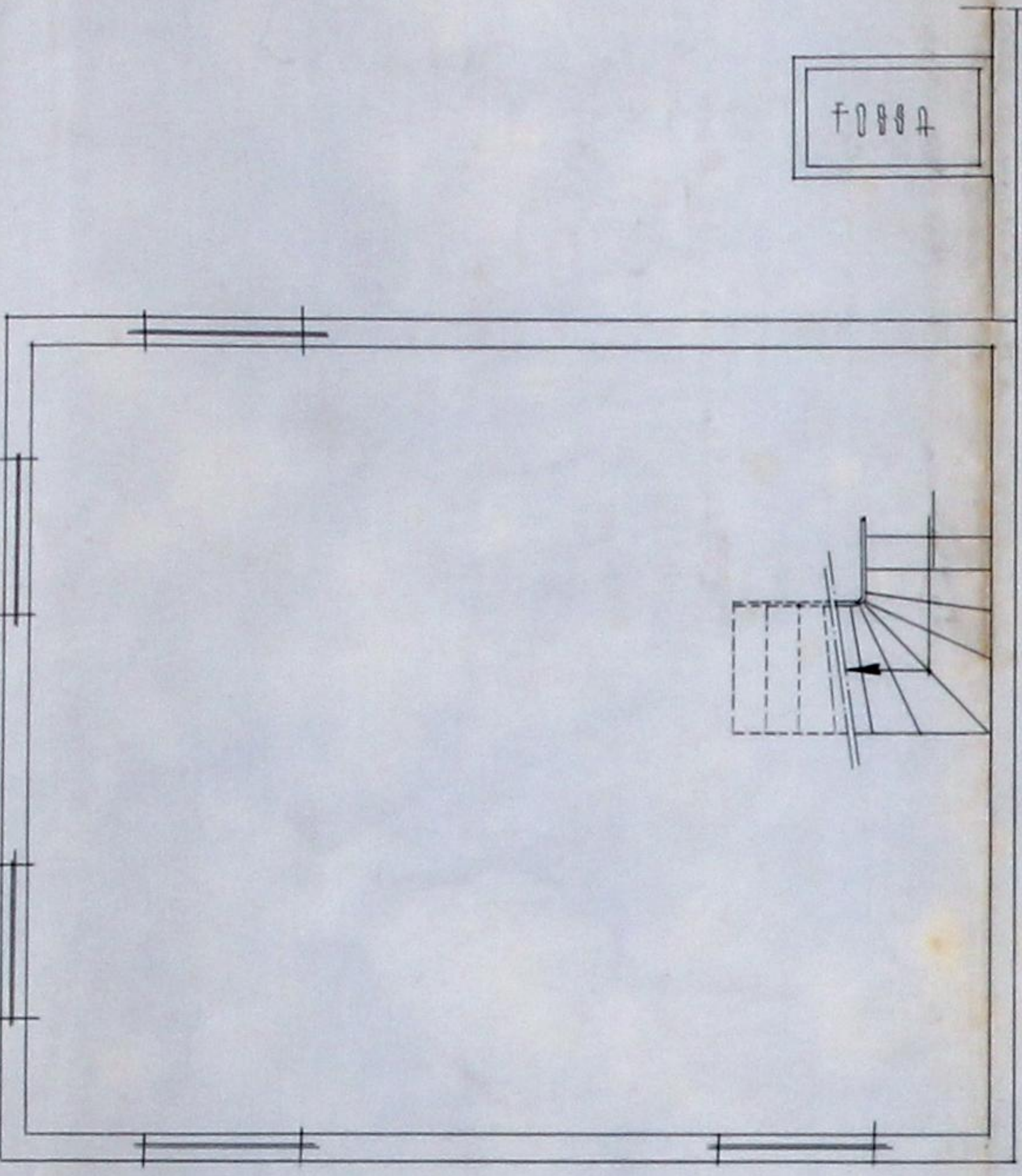
ESCALA DOB D.M.

MINISTRO DA ENFERMAGEM  
CABINETE DO PORTO  
3 Set 1938

Satisfaz

*[Handwritten signature]*

F0004

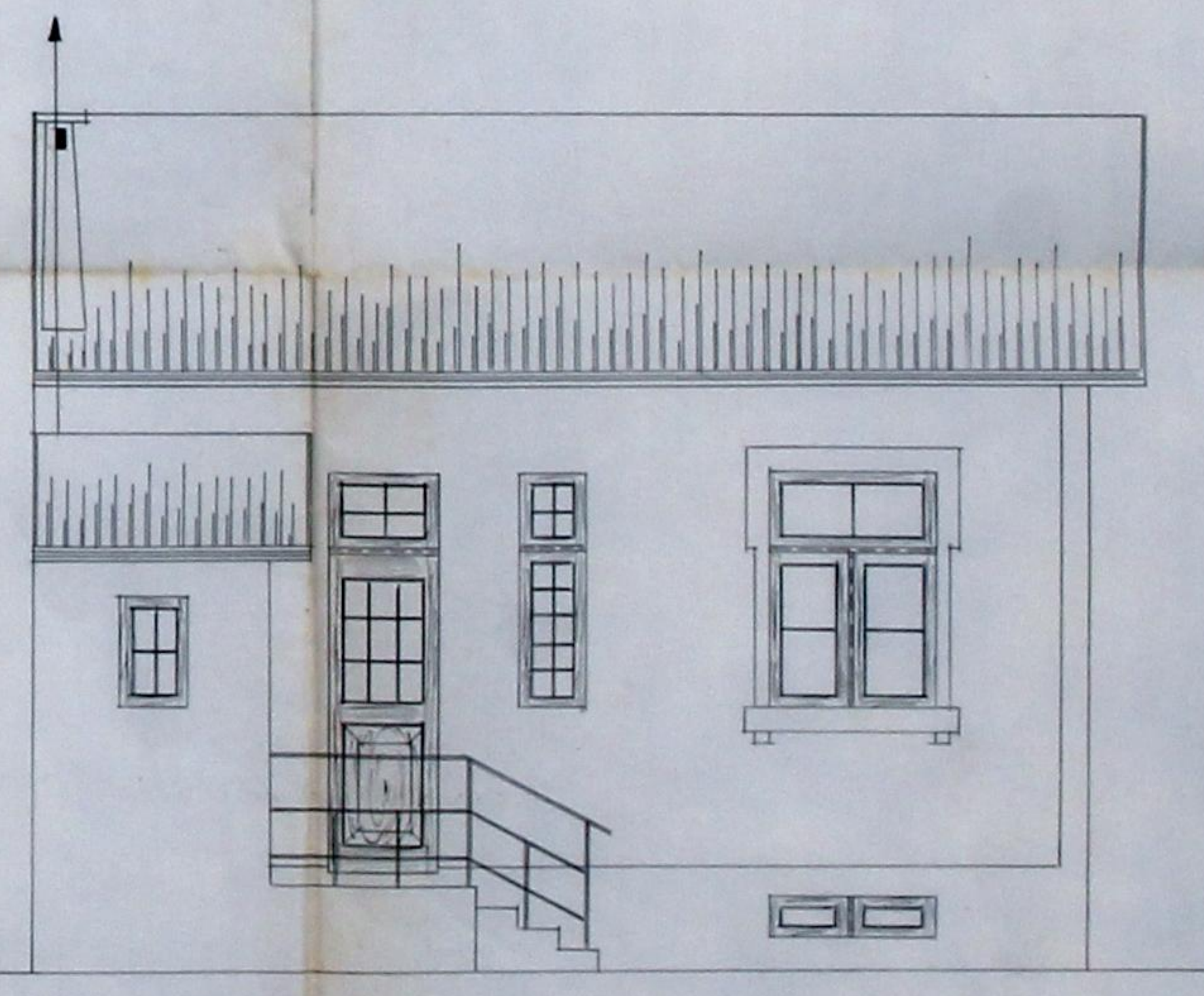
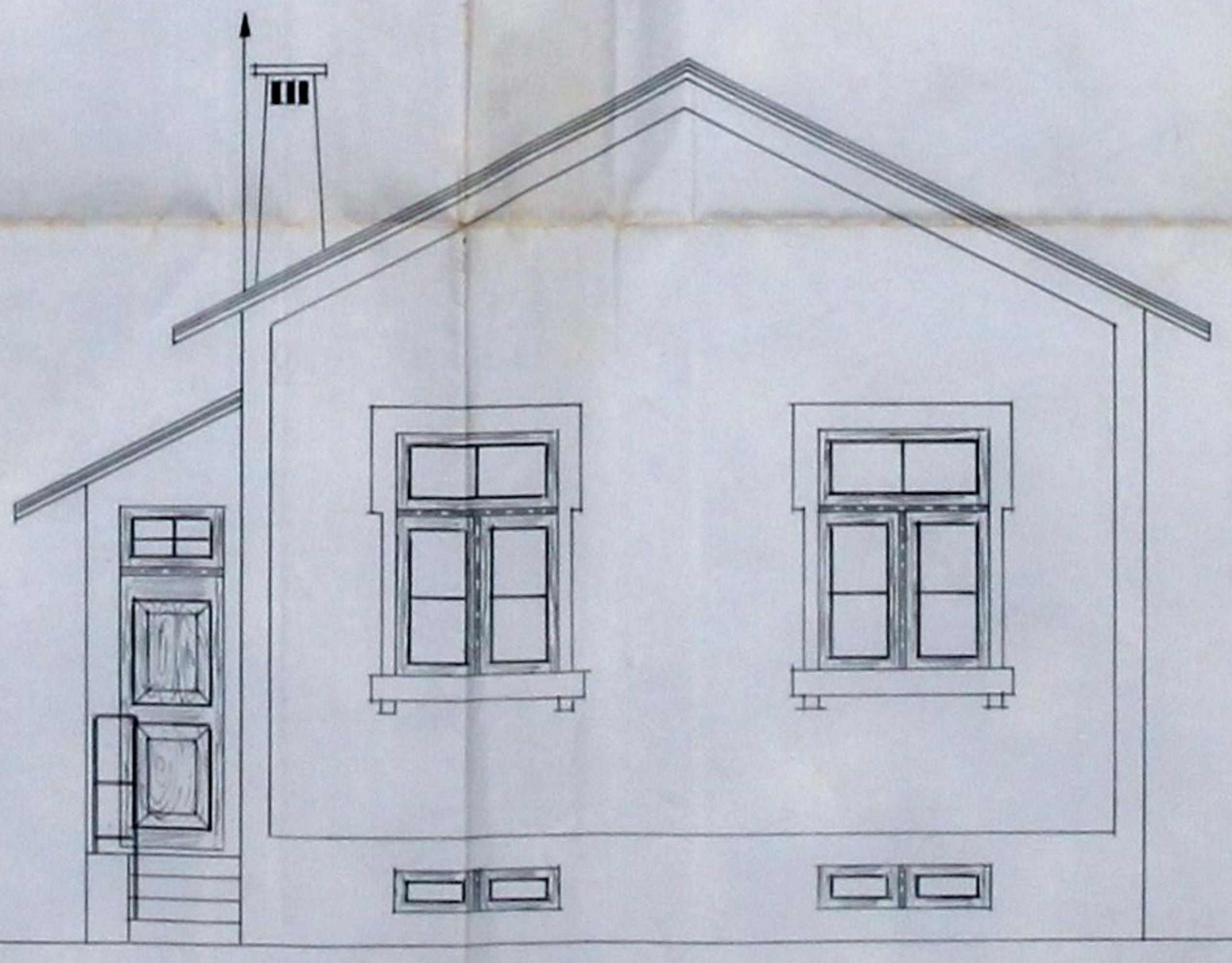
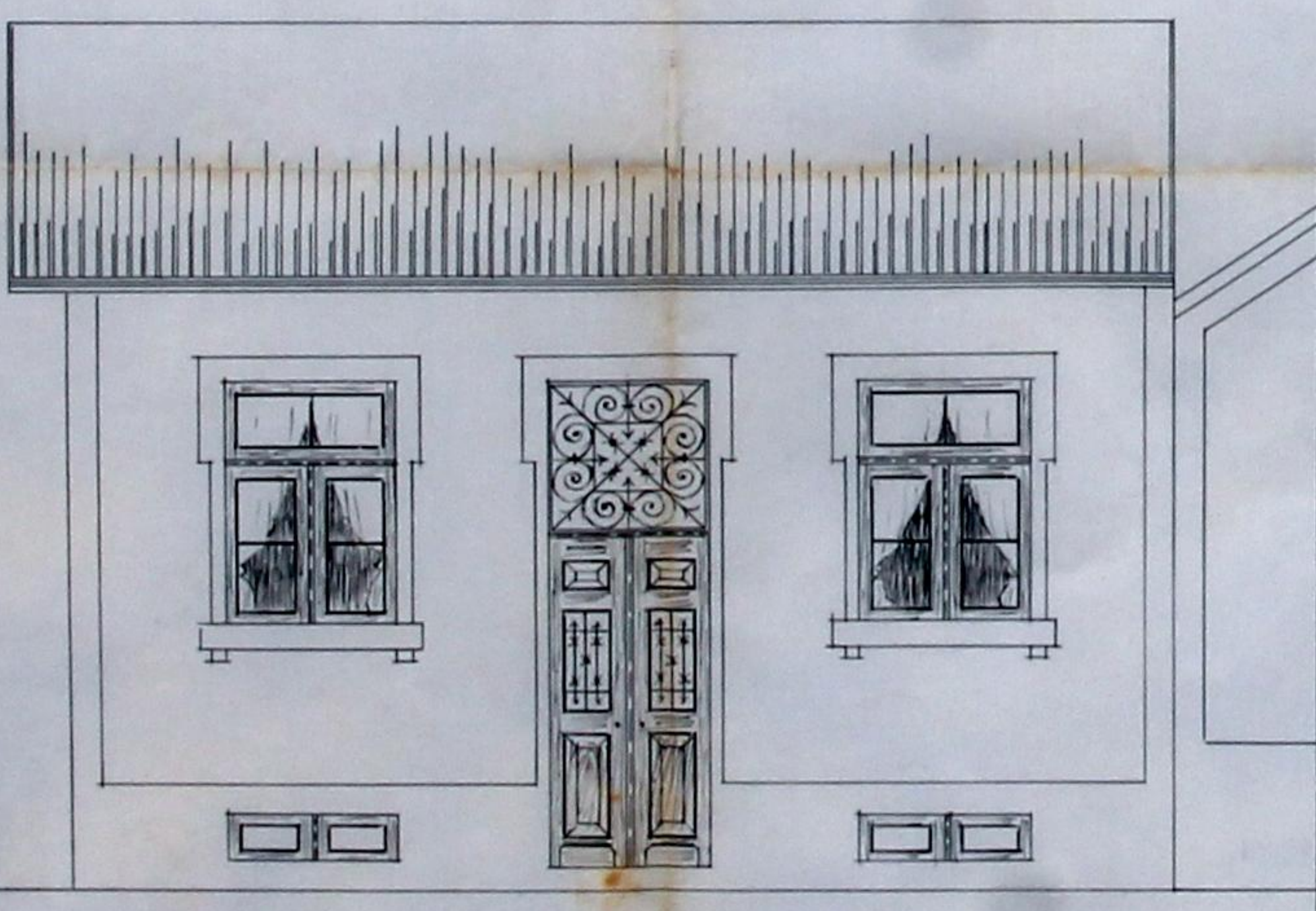


C A V E

RIZ - DO - CAÃO

CORTE 'A-B'

CORTE 'C-D'



ALÇADO PRINCIPAL

ALÇADO LATERAL

ALÇADO POSTERIOR

18 AGO 1938

