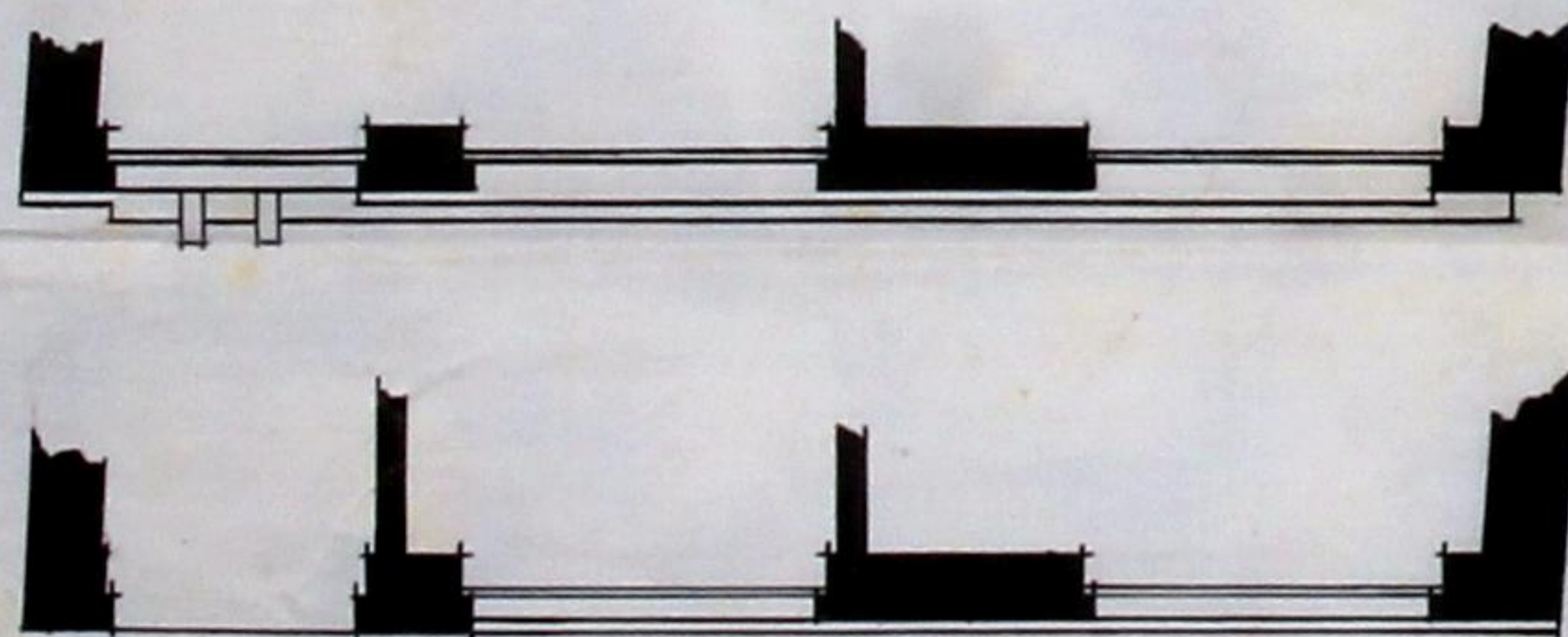


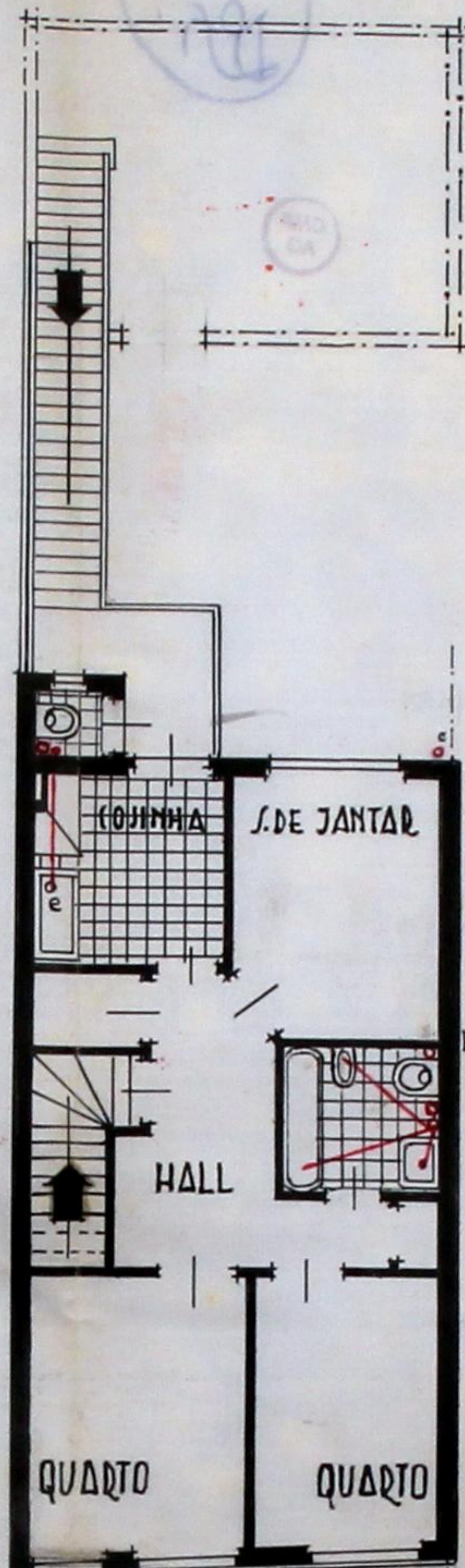
FACHADA PRINCIPAL

ESCALA = 1x50.



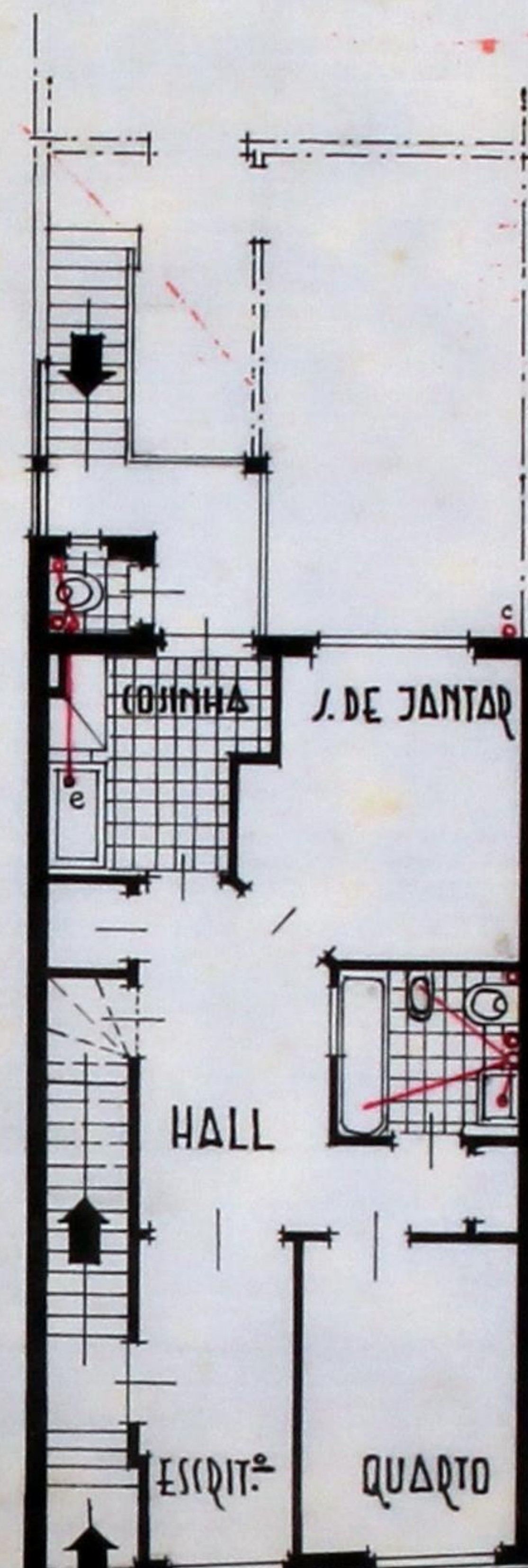
DETALHE DAS PLANTAS SUPERIORES

(FACHADA PRINCIPAL)

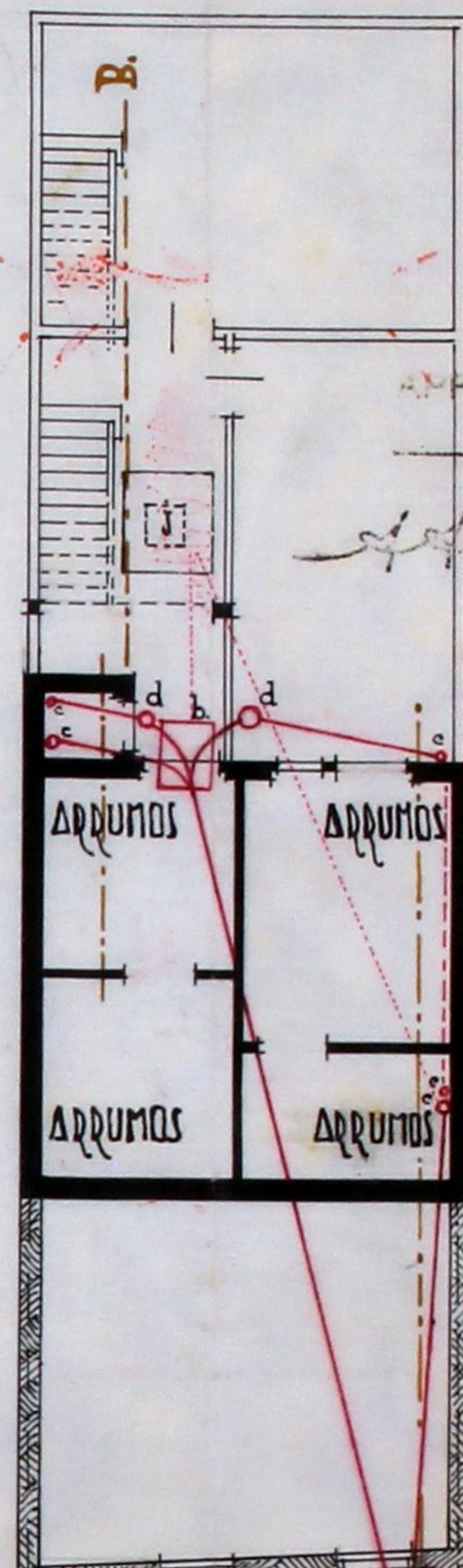


PRIMEIRO ANDAR

ESCALA = 1x100.



DEZ DO CHÃO



LOJA



SIFÃO DE PÁTIO

APPROVADA. PORTO SIN CAMARÁ
DE 1936 DE 17

PREZIDENTE

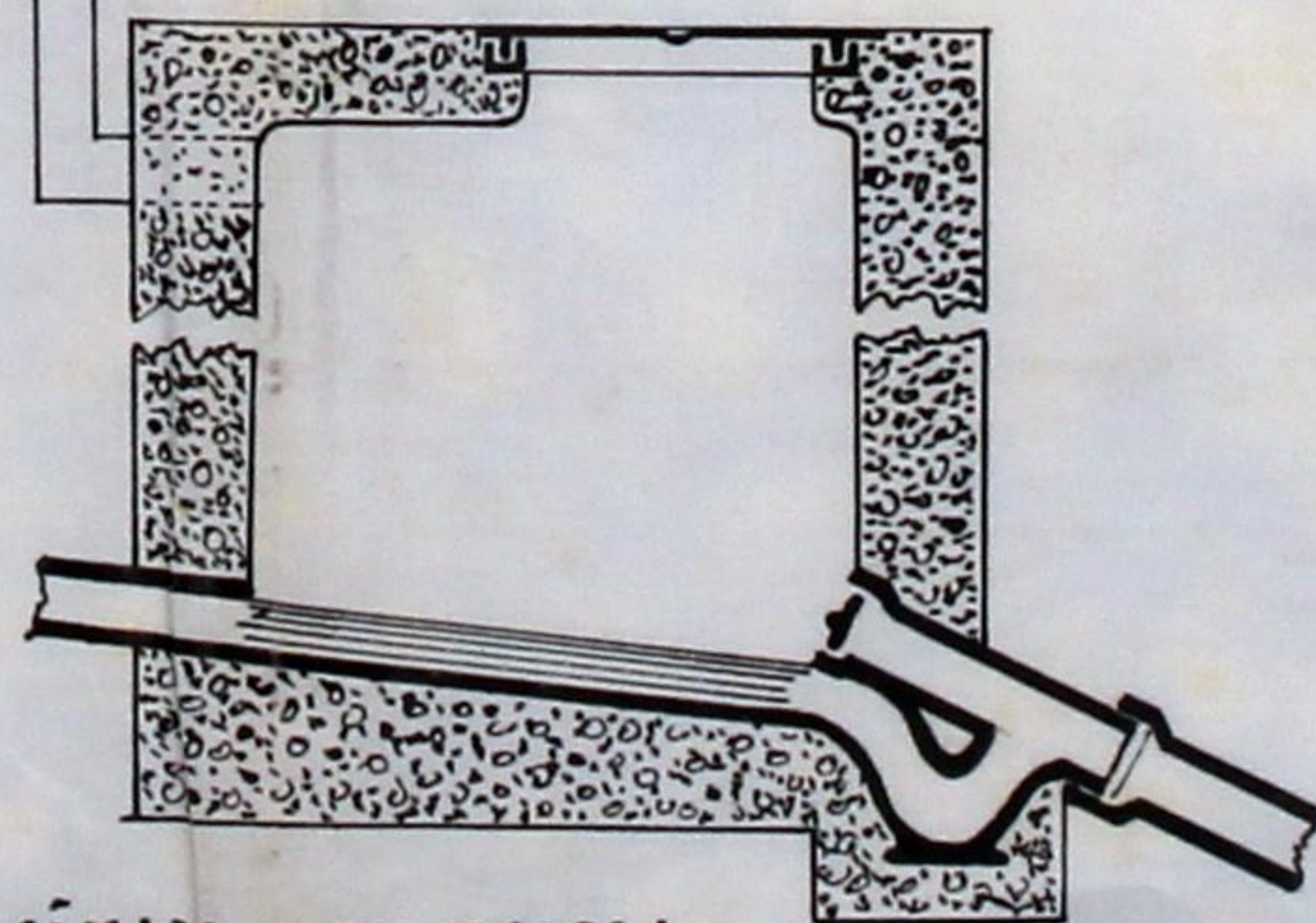
Amblino

CONSELHO DE ESTÉTICA E URBANIZAÇÃO
DA
CIDADE DO PORTO
SEÇÃO DE URBANISMO
APROVADO

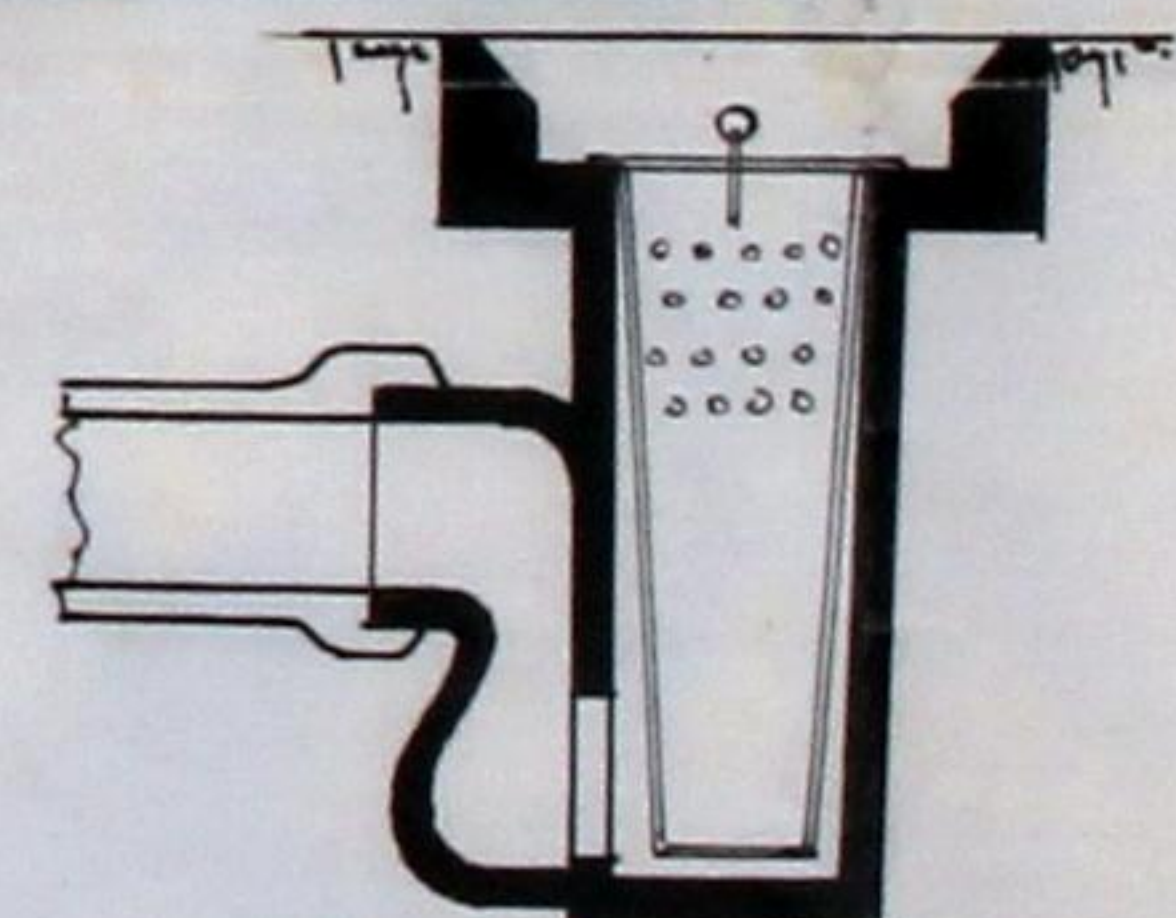


DETEDE

PROJECTO Δ QUE SE REFERE O REQUERIMENTO DO EX^{MO}
SR. RODRIGO ALBANO DE MAGALHÃES.

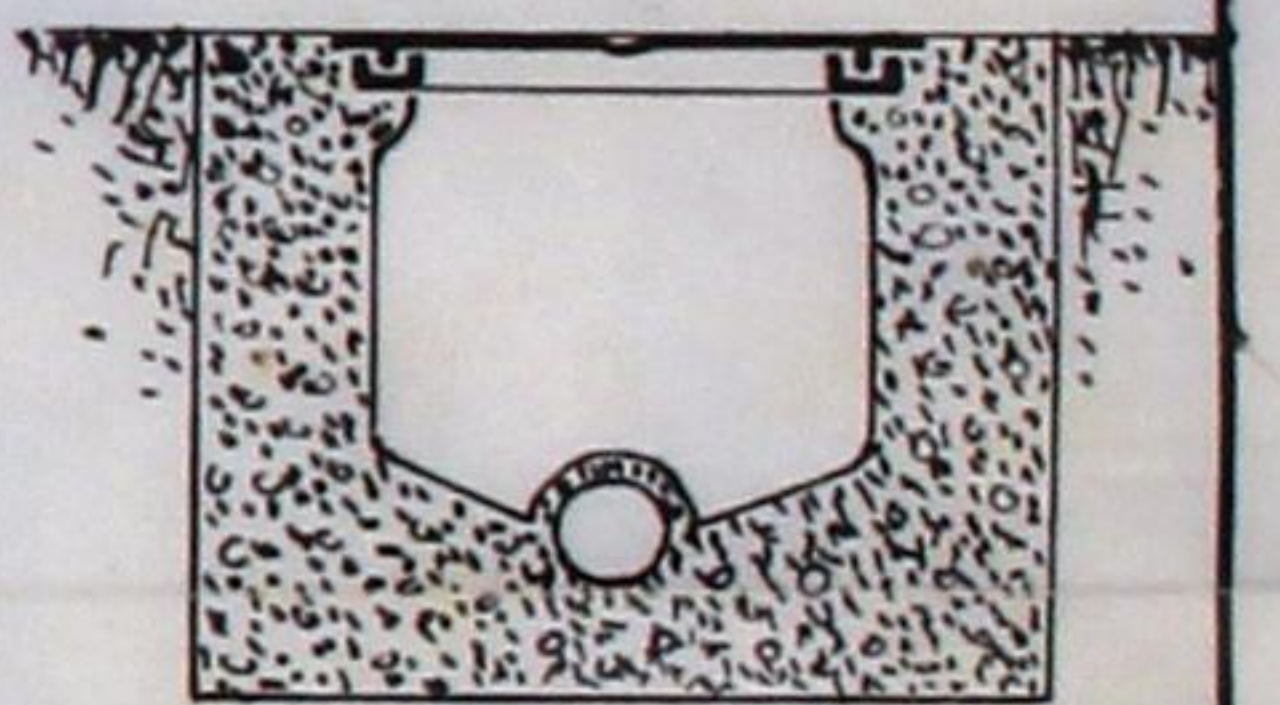


CÂMARA INTERCEPTORA.



SIFÃO DE COZINHAS

ESCALA = 1x20.



CÂMARA DE VISITA

Amblino
Arquiteto



PORTO, 1936

